



MERCHANDISE



OFFICIALLY LICENSED MERCHANDISE

www.mpcpromotions.com/catmerchandise

FALL
2025



HEADWEAR	4
DRINKWARE.....	21
BAGS & COOLERS	28
TOOLS & GEAR	36
MOBILE & OFFICE.....	40
GOLF	49
AUTOMOTIVE.....	53
MISCELLANEOUS.....	54
LANYARDS AND KEYTAGS	60
APPAREL.....	62
YOUTH APPAREL	108
GIFT BOXES / DEALER DESIGNED	118



NEW!



CT2706 • Vertical
Low profile structured, chino twill. Pre-curved visor. Plastic backstrap.



CT2569 • Dapper
Low-profile suiting fabric chino twill. Flag on side. Plastic backstrap.



CT2633 • White Shadow
Low profile, structured. Pre-curved visor with plastic closure.



CT2699 • Brigade
Low profile structured, bamboo slub with trucker mesh back. Pre-curved visor with contrast stitching on visor. Plastic backstrap.



CT2654 • Loyal
Low profile, structured, chino twill with trucker mesh back. Pre-curved, contrast stitching, plastic closure.



CT2489 • Dedicated
Chino with trucker mesh back. 3D front embroidery. Side displays US Flag. Structured. Plastic Back Strap.



CT2521 • Nation
Made of a chino fabric with trucker mesh back. Low profile and back flag tab label. Structured. Plastic back strap.



CT2693 • White Hall
Low profile structured chino with a soft mesh back. 3D front graphic embroidery. Plastic backstrap.



CT2676 • Statesman
Washed chino, low profile, unstructured. Undercut top visor, front 3D textured embroidery. Hook and loop closure.



CT2628 • Star Spangled
Low profile, structured. Chino with trucker mesh back. Pre-curved visor, tonal stitching. Plastic closure.



CT2662 • Shadow
Low profile, structured, chino with digital camo visor. Pre-curved, tonal stitching, hook and loop closure.

CT2709 • Overwatch
5 panel low profile structured, chino with camo printed trucker mesh back. Pre-curved visor. Plastic backstrap.



CT2642 • Tango
Mid profile, structured, 5 panel chino with trucker mesh back. Pre-curved, tonal stitching, plastic closure.



CT2547 • Disguise
Chino twill with trucker mesh back. Low profile, structure with plastic backstrap.



CT2606 • Swagger
Suiting with mesh back. Structured with slight visor curve. Plastic back strap.



CT2629 • Edge
Low profile, structured. Edge camo, chino visor with trucker mesh back, pre-curved visor, and tonal stitching. Plastic closure.



CT2584 • Mission
Mossy oak infinity with trucker mesh back. Front twill applique with outside serged edge. Low profile, structured with a slight visor curve. Plastic back strap.



CT2431 • Blaze Hunter
Blaze orange with green underbill. Hook and loop closure.



CT2432 • Digicamo Mesh
Digital camo with grey trucker mesh back. Hook and loop closure.



CT2686 • Ghost
Low profile unstructured, washed generic camo with chino back. Hook and loop closure.



CT2655 • Alloy
Low profile, structured, Realtree MAX 5 camo. Pre-curved, tonal stitching, plastic closure.



CT2663 • Wild Game
Pro shape, structured, 5 panel with trucker mesh back. Slight curved visor, tonal stitching, plastic closure.



CT2669 • Pursuit
Washed wavy cotton generic camo with mesh back. Low profile, structured with pre-curved visor. Front twill applique with screenprint. Plastic closure.



CT2672 • Sarge
Microfiber with sublimation and trucker mesh back. 5 panel, pro-shape, structured with slight visor curve. Front wearer's left applique with screenprint. Plastic closure.



NEW!

CT2708 • Stay Golden

Mid profile structured, chino twill with polyester mesh back. 7 panel with flat bill visor and visor rope. Plastic backstrap.



NEW!



CT2713 • Throwback

Low profile structured, suiting with foam mesh. Pre-curved visor. Hook and loop closure.



CT2644 • Toffee

Low profile, structured, chino with trucker mesh back. Pre-curved visor, tonal stitching, contrast sweatband and seam tape.

CT2572 • Yellowstone

Block C mid-profile, structured chino hat with trucker mesh back and front twill applique. Plastic backstrap.



CT2463 • Ole Diesel

Light brown chino with mesh back. Diesel Power patch. Hook and loop closure.



CT2613 • Pewter

Chino with trucker mesh back. Structured with slight visor curve. Plastic back strap.



CT2679 • 1925

Chino Twill slight curved pro shape structured hat. Front woven label with serged edge. Plastic backstrap.



CT2340 • Bro

Because everybody and their brother needs one of these. Structured. Plastic closure.



CT2687 • Timeless

Pro-shaped structured, chino twill with mesh back. Plastic backstrap.



CT2657 • Classic

Low profile, structured, chino. Pre-curved visor, contrast stitching, velcro closure.



CT2648 • Historic

Pro shape, structured, chino with trucker mesh back. Slight curved visor, tonal stitching, plastic closure.



CT2678 • Equipment

Pro Shape structured chino with trucker mesh cap. Front distressed tractor on kraft paper. Undercut top visor. Plastic backstrap.



CT2627 • Combo

Low profile, structured. Chino, pre-curved & rolled edge visor, and tonal stitching. Plastic closure.



CT2661 • Strength

Low profile, structured, chino with trucker mesh back. Pre-curved, visor contrast stitching, white and blue plastic closure.



CT2571 • Bandit

Diesel Power mid-profile, structured chino hat with trucker mesh back and front twill applique. Plastic backstrap.



CT2659 • Clay

Low profile, unstructured, chino twill with mesh overlay and mesh back. Pre-curved, tonal stitching, hook and loop closure.



CT2715 • Trusted Since
Pro-shape structured, taslan with polyester mesh back.
Professional fit. Semi-curved visor. Plastic backstrap.



NEW!



CT2704 • Kinetic
Low profile structured, sublimated crown with trucker mesh back. Plastic backstrap.

CT2705 • The Bear
Mid profile structured, chino twill with polyester mesh back. 7 panel with flat bill visor. Plastic backstrap.



CT2696 • Chestnut
Low profile structured, chino with trucker mesh. Pre-curved visor and tonal stitching. Plastic backstrap.



CT2697 • Force
Low profile structured, canvas with trucker mesh back. Pre-curved visor. Plastic backstrap.



CT2692 • Goldenrod
Pro-shaped structured, chino with a slight curved visor. Plastic backstrap.



CT2588 • Saddleback
Washed canvas with trucker mesh back. Pro-shaped, structured with a slight visor curve. Plastic back strap.



CT2568 • Irving
Mid-profile chino hat with trucker mesh back. Front twill applique with embroidery and serged border. Plastic backstrap.



CT2607 • Infinite
Chino with front panel & debossed logo, structured with pre-curved visor. Plastic back strap.



CT2665 • Suits
Suiting fabric, low profile, structured with pre-curved visor. Front wearer's left button silicone patch. Hook and loop closure.



CT2668 • Crafted
Washed bamboo slub canvas with trucker mesh back. Low profile, structured with pre-curved visor. Front jacron paper with 3D print. Plastic closure.



CT2544 • Oakland
5 panel mid-profile. Acrylic wool front panel with trucker mesh back. Chino visor with plastic back strap.



CT2553 • Mossy
Chino with trucker mesh back. Low profile, tonal stitching and structured with plastic backstrap.



CT2688 • Elk
Pro-shaped structured, chino twill with mesh back. Plastic backstrap.



NEW!



CT2714 • Canyon
5 panel low profile structured, canvas with slight visor curve. Braided visor cord. Plastic backstrap.



CT2684 • Paw Paw
Mid profile structured, chino with a pre-shaped visor and a braided visor cord. Plastic backstrap.



CT2691 • Tangle
Low profile unstructured, chino with trucker mesh. Tonal stitching. Plastic backstrap.

NEW!



CT2707 • Blackhawk
Low profile structured, polyester spandex with trucker mesh back. Traditional fit. Pre-curved visor. Plastic backstrap.

NEW!



CT2710 • Outback
Low profile structured, chino twill with polyester mesh back. Pre-curved visor with braided cord. Plastic backstrap.



CT2685 • Nettle
Low profile structured, chino canvas front, with a trucker mesh back. Plastic backstrap.



CT2129 • Mustard Cap
Washed chino. Unstructured. Metal eyelets. Hook and loop closure.



CT2690 • Mulberry
Low profile structured, chino with trucker mesh. Tonal stitching. Plastic backstrap.



CT2673 • Slate
Chino, low profile, structured with pre-curved visor. Front flat embroidery. Hook and loop closure.



CT2674 • Wrangler
Washed pigment dye with soft mesh back. Low profile, pre-curved visor, contrast stitching on visor. Plastic closure.



CT2682 • Split
Mid-profile split six chino with trucker mesh. Structured. Plastic backstrap.



CT2675 • Alabaster
Microfiber with trucker mesh back. Pro-shape, structured with slight visor curve. Front applique with embroidery. Plastic closure.

NEW!



CT2701 • Ultra
Low profile structured, nylon with polyester mesh. Pre-curved visor. Plastic backstrap.



CT2038 • Black/White Twill/Mesh
Cotton twill/mesh. Structured. Plastic closure.



CT2211 • Navy Twill/Soft Mesh
Washed chino with mesh back. Unstructured. Hook and loop closure.



CT2015 • Black Twill/Mesh
Cotton/twill/mesh. Structured. Plastic closure.



CT2016 • Black Twill
Cotton twill. Structured. Plastic closure.



NEW!



CT2703 • Vixen Rope
Low profile structured, chino with trucker mesh back.
Pre-curved visor with braided rope. Plastic backstrap.



CT2689 • Dandelion
Low profile structured, ladies crochet lace overlay and a front trucker mesh back. Plastic backstrap.

CT2641 • Scottie
Low profile structured, suiting fabric with soft mesh back.
Pre-curved visor, contrast stitching, hook loop closure.



CT2591 • Pearl
Chino with trucker mesh back. Unstructured, low profile with pre-curved visor. Faux suede patch. Hook and loop closure.

CT2652 • Sweet Victory
Low profile, unstructured, Realtree Xtra pink with trucker mesh back. Pre-curved, tonal stitching, plastic closure.

CT2631 • Bougie
Low profile, structured. Suiting fabric with chino back. Contrast stitching, chino sweatband, and plastic closure.

CT2671 • Blossom
Chino with soft mesh back. Low profile, unstructured with pre-curved visor. Sublimated visor with undercut top visor. Hoop and loop closure.





HEADWEAR



NEW!



CT2711 • Bulldozer
Youth low profile structured, chino twill with corduroy pre-curved visor. Plastic backstrap.



CT2694 • Kid Crew
Toddler chino, low profile, unstructured. Plastic backstrap.



CT2526 • Build Toddler Cap
Washed toddler chino hat. HD screen print on the front. Unstructured. Hook and loop closure.



CT2649 • Cobalt
Toddler unstructured chino with soft mesh back. Plastic backstrap.



CT2653 • Salmon
Toddler unstructured chino with soft mesh back. Plastic backstrap.



CT2598 • Lil Dude
Toddler canvas, low profile, unstructured with pre-curved visor. Plastic back strap.



NEW!



CT2698 • Clay
12" knit with 3" roll. Acrylic knit with tonal stitching.

NEW!



CT2712 • Confetti Knit
12" acrylic knit with 3" roll. Faux leather patch with embossing.



CT2681 • Snow Angel
Recycled yarn. Cable knit cap with cuff and faux suede label. Faux fur pom.



CT2514 • Toastie
12" yarn dye acrylic knit with 3" roll.



CT2516 • Roastie
Yarn dye acrylic knit scarf. Front flat embroidery.



CT2513 • Night
12" acrylic knit with 3" roll. Front embroidery, back twill applique with embroidery.



CT2614 • Call of Duty
12" acrylic jacquard knit with 3" roll. Front twill patch.



CT2660 • Combo Knit
Acrylic knit, 12" blaze orange with 3" roll



CT2677 • Blizzard
12" Acrylic yarn dye knit with a 3" Roll.



CT2596 • Contrast
12" acrylic yarn dye knit with 3" roll. Faux leather patch.



CT2253 • Black/Yellow Knit Cap
Two-tone 8" knit cap.



CT2011 • Black Knit
12" knit cap with roll.



CT2622 • Fun Day
Chino bucket, binding around edge of visor & drawstring.



CT2119 • Skull Cap
Heavy brushed twill. One size fits most. Adjustable back tie straps.



DRINKWARE

NEW!



CT1236 • Textured Tumbler
27oz. textured double wall tumbler



CT1183 • 20oz Vacuum Bottle
Convenient twist off cap with a rubber grip and carrying handle. Keeps drinks cold for up to 24 hours and hot for 12 hours. Powder coated exterior.



CT1109 • Dozer Forest Quencher
40 oz. Quencher made from recycled plastic, single-walled, flip-up straw, twist lid, and ergonomic handle for carrying.



CT1112 • Black Triple Vacuum Tumbler
A triple vacuum tumbler with just the screw-on black ring, this workhorse holds a bottle or a 12 oz. can. Drop in the clear spill-resistant plastic lid, and you have an on-the-go tumbler for your coffee or ice-cold drink.



CT1113 • Coral Triple Vacuum Tumbler
A triple vacuum tumbler with just the screw-on gray ring, this workhorse holds a bottle or a 12 oz. can. Drop in the clear spill-resistant plastic lid, and you have an on-the-go tumbler for your coffee or ice-cold drink.



CT1092 • Square Tumbler
16 oz. ceramic tumbler with a silicone sleeve that keeps your fingers cool and helps to maintain your grip. Snap-on sipping lid for easy drinking.

1.866.451.4631



CT1096 • Retro Lunchbox w/ 20oz Tumbler
Bring back fond school memories with this cool, retro-styled metal lunchbox paired with a large tumbler.

CT1187 • 24oz Clear Tumbler
24 oz single-wall clear tumbler, lid with straw, BPA free, top rack dishwasher safe.

NEW!



CT1225 • Stainless Steel Can Cooler
Stainless steel can cooler fits 12 oz. cans.



CT1974 • Zip and Sip Can Cooler
The ultimate adjustable drink holder! Go from keeping your morning coffee warm to your evening brew cold. Perfect for every occasion. Featuring two zippers with canvas gussets, adjusts to fit different size beverages.



CT1200 • Scuba Coolie
Made of 1/8" high-density foam, this coolie absorbs condensation, leaving the drink cold and your message clear.

NEW!



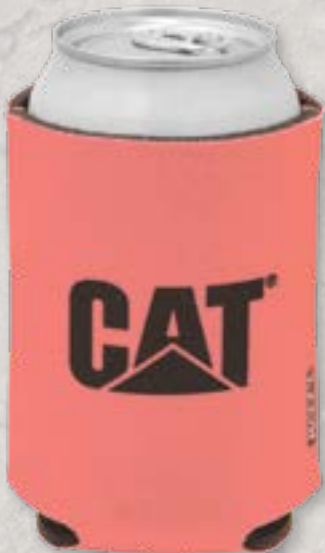
CT1235 • Vacuum Insulated Bottle
34 oz. Vacuum insulated bottle with twist top spout



CT1561 • Hex Magnetic Koozie
Designed to hold most cans and bottles, this holder is made of high quality neoprene (wetsuit rubber material) with magnets sewn on one side. This item keeps drinks cold and convenient while clinging to any steel surface: tailgates, workbenches, tool box.



CT1173 • Black Koozie with 2-color logo
The collapsible Koozie® can cooler folds so you can put it in your pocket, purse, and more.



CT1282 • Pink Collapsible Koozie
This pink collapsible Koozie® can cooler folds so you can put it in your pocket, purse, and more.



CT1615 • Camo Koozie
Collapsible for convenience. Camo to hide your drink from everyone but you!



CT1182 • The Party Cup
Great for tailgating, parties, and company picnics. Double wall construction for insulation of hot and cold liquids. Meets FDA requirements, hand wash recommended. 5 1/2 inch in height.



CT1091 • Silicone Straw Topper
Specifically designed for straws up to 10mm diameter (0.4inch), it prevents dust and keeps your drinks clean. Made of 30% recycled food grade silicone. BPA-free. Hand wash only.



CT1807 • 32 oz. Oil Drum Drinking Cup
22 oz. Plastic. Just like the real thing. . . only much smaller. And not filled with oil! Comes with drinking straw and ready to fill with your favorite beverage.



CT1805 • Hippo Mug
40 oz. tumbler keeps your favorite beverages cold for up to 11 hours & hot for up to 7 hours. Convenient screw-on clear straw lid with a twist closure, allowing you to drink with or without the removable straw. 18/8 stainless steel, BPA-free. Double-wall vacuum insulation. Reusable straw.



NEW!

CT1202 • Tumbler with Hand Strap
21 oz. vacuum insulated stainless steel tumbler with hand strap. Lock-tight, screw on lid with flip-top and ergonomic grip.



CT1776 • Oil Filter Tumbler
So close to the real thing that your co-workers may be concerned about your new drinking choice! 17 ounce stainless steel tumbler.



CT1629 • Gripper Bottle
31 ounce. Shatterproof flip-top, gripper bottle includes a drink-thru sipper lid, wide mouth opening to add ice cubes or for stirring.



CT1904 • 36 oz. Tritan Mountaineer
36 oz. Drink up and stay hydrated! Essential for any outdoor adventure or activity while keeping track of your daily intake.



CT1095 • Sports Bottle
25 oz. Slim line sports bottle with push/pull cap. Ships assembled. Safe for food contact. Top rack dishwasher safe. Do not microwave.



CT1950 • Mammoth Mug
The 40 oz. capacity allows you to easily keep track of your hydration! The large handle provides an easy grip to sip or hold when you are on the go. Hand wash recommended. Removable straw included.



CT1979 • Hex Tumbler
This tumbler holds 20 oz. and features a slide-to-close lid. Double walled, 18/8 stainless steel interior and color-coated stainless steel exterior to help keep your ice in your water for over 16 hours and hot for over 8 hours. No condensation! Designed to stay dry and not get too cold or hot to the touch.



CT1707 • Tool Box Tumbler
14 oz. tumbler with stainless steel exterior and plastic interior. Screw on lid.

NEW!



CT1237 • Campfire Mug
14 oz. powder coated campfire mug with copper lining



CT1573 • Block C Mug
14 oz ceramic mug with glossy colored exterior and glossy colored interior



CT1958 • 15oz. White Mug
15 oz. traditional ceramic mug with an easy comfort grip C-curved handle.



CT1108 • Smash Dozer Mug
15 oz. mug measures 4.5" H x 3.4" in diameter, features a comfortable C-shaped handle, and is microwave and dishwasher-safe.



CT1090 • Flag Mug
19 oz. large ceramic C-handle mug. This mug holds more than the average cup so you can get cozy in your blanket and do not have to make refill runs!



CT1556 • Go Yellow Mug
12 oz. double-wall insulated, clear coffee mug. Includes a thumbslide lid. Impact and shatter resistant. Cool to the touch, right out of the microwave. Keeps drinks hot or cold. Microwave, freezer, and top-rack dishwasher safe. Lifetime guarantee on mug (Lid excluded).



CT1911 • 12 oz. Sipper Tumbler
12 oz. stemless wine tumbler with push-in sipper lid and powder coated exterior.



CT1934 • 22 oz. Passion Hot/Cold Tumbler
The Passion 22 oz. double wall tumbler will keep your hot or cold drinks at just the right temperature. It is made from plastic and has a clear lid with colorful rotating closure and silicone seal. BPA free.

NEW!



CT1203 • Coffee Tumbler
16 oz. tumbler that has an outer layer made of a new material consisting of recycled coffee grounds and recycled polypropylene. Push-on lid with sliding drink opening. Hand wash only.



CT1920 • 20 oz Rainbow Viking Nova Tumbler
20 oz. double wall vacuum insulated stainless steel tumbler with copper lining and iridescent finish. Includes a press in, twist closure lid. Keeps liquid hot for 5.5 hours or cold for 24 hours.



BAGS & COOLERS

NEW!



CT1210 • Heather Cooler Tote

rPET cooler tote with zippered main compartment and large zippered front pocket. Made from recycled heather polyester. Holds up to 20 cans plus ice.

NEW!



CT1239 • Block C Tote

5 inch gusset, 20 inch reinforced handles. Size: 16" x 13" x 5"



CT1535 • Jute Tote

Carry the things you need to get the job done in a fun and fashionable way. Crafted from sustainable, renewable, biodegradable and eco-friendly PVC free jute material, with interior slip pocket and dual carrying handles.



CT1534 • Tri-Color Tote Bag

100% heavy cotton canvas. 20" nylon natural webbed handles. 8" handle drop. Whether you're running errands, heading to work, or simply looking for a reliable everyday bag, this tote bag is a perfect choice that combines functionality with a touch of flair.



CT1982 • Orbit Cooler
This spacious cooler is out of this world! It can be a lunch cooler that would satisfy even the biggest appetite or a great tailgate cooler. Features a zippered main compartment and large front pocket for extra storage. The single, padded carry handle on top plus an adjustable shoulder strap provides flexibility. Leak proof.



CT1996 • 20 Can Backpack Cooler
The 20 Can Backpack Cooler is designed for those always on the go. This backpack cooler features a padded back panel and comfortable backpack straps for easy carrying. Grab and go with the removable, adjustable shoulder strap with shoulder pad. This cooler is heat sealed and features PEVA lining.



CT1533 • Budget Cooler Bag
Zippered main compartment. 20" carrying handle. Front pocket. Holds 6 cans. Spot clean and air dry.



NEW!

CT1212 • 9-can Lunch Cooler
Lunch cooler features a fully insulated, waterproof main compartment that holds 9 cans plus ice. It has a front zippered pocket, one side mesh pocket and a shoulder strap.



CT1093 • Expandable Travel Tote
Zippered front pocket and compartment to fold the tote in, two side pockets to hold small items or a water bottle. 23 inch strap. Expandable with trolley strap.



CT1240 • Camo Cooler
This unique camouflage cooler bag with a zippered main compartment, front zippered pocket and side mesh pocket. Top carry handle and adjustable shoulder strap



NEW!



CT1189 • Recycled 6 Can Lunch Cooler
6 can lunch cooler features Repreve® Exterior Materials made from recycled plastic bottles. 6.50"D x 9.00"W x 6.00"H.



CT1863 • Kanga Cooler
KASE MATE 12 pack cooler. Slide in a Cold 12-Pack of your favorite beverage to Keep Your Drinks Cold for up to 7 Hours- No Ice.



CT1003 • American Flag Lunch Bag
Bring a touch of patriotism to recipients' lunch hour with the American Flag Lunch Bag. 6.5" L x 8.5" W x 6.75" H lunch totes are insulated with a PEVA liner to keep food fresh. Pouch on the front for extra essentials.



CT1816 • Brandt 6 Can Lunch Cooler
Features a zippered main compartment with a heat-sealed PEVA lining a zippered front pocket with mesh accent as well as a shoulder strap and grab handle for easy carrying.





CT1949 • Adventure Duffel Bag

This duffel bag can be carried three ways: by the clip, as a duffel and as black-pack. Surprisingly light-weight and made of water-resistant material.



CT1910 • Capetown Heathered Duffel Bag

This heathered duffel bag will certainly speak volumes! It's made of 600 denier polyester with 25" web carrying handles and features a zippered main compartment as well as beautiful leatherette accents. This is great as an overnighter, for use at the gym, or for packing for longer trips.



CT1547 • OGIO Backpack

A go-anywhere design in a streamlined size that's engineered to hold all the essentials in place. Single main compartment. Drop-in digital media/audio pocket with headphone exit port. Dual-side mesh beverage pockets. Front pocket with deluxe organization panel. Yoke-style shoulder straps. Laptop sleeve: 15.3"h x 10.5"w x 2"d; fits most 16" laptops Dimensions: 17"h x 13"w x 7"d Capacity: 1,500 cu. in./24.6 L Weight: 1.4 lbs./0.63kg Note: Bags not intended for use by children 12 and under



CT1106 • Vision Backpack

14.1" computer backpack with a large main compartment and laptop slot, padded back and shoulder straps, two water bottle mesh pockets, and various sized pockets for your organizational needs.



CT1546 • Yellow Duffle

Made of 600D polyester ripstop fabric with a double PU coating, this 28" x 14" x 13" bag includes a bottom panel made of 450D polyester with a double PU coating as well. Some additional features include a zippered main compartment with two zipper pulls, a zippered front pocket, plastic hardware, web handles with a self-fabric handle wrapper reinforced at stress points, and an adjustable and detachable shoulder strap for easy carrying.



CT1569 • Cypress Drawstring Backpack

The Cypress backpack has unique drawstring closure and is made from 300D polyester canvas. There is a large main compartment, front flap with buckled closure and zippered pocket, front storage pocket with mesh sides and elastic straps for expandability. Padded backpack straps and carry handle make it easy to bring your stuff along.

NEW!



CT1211 • Commuter Laptop Backpack

rPET top loading laptop backpack is made of recycled polyester and is packed with extra features. Fits a 15" laptop, padded shoulder straps, and top grab handle.





NEW!



CT1229 • Waterproof Duffel Bag
This waterproof duffel bag is built tough. Features include a shoulder strap, front and rear zippered pockets and ample room. Size: 23" x 11 1/2"



CT1889 • Sports Duffel Bag
This bag features a double zippered closure, adjustable/detachable shoulder strap, web carrying handles with hook and loop closure, a zippered front pocket, side compartment, and a side mesh pocket for any other essentials. Size: 19" x 10" x 9 3/4"



CT1017 • Caterpillar PVC Luggage Tag
This brightly colored PVC luggage tags immediately identify your bags at the airport carousel. Bag tag size: 2.25" x 4" and includes backside write on.

NEW!



CT1224 • Luggage Tag with Tracker
This luggage tag has a built in tracker which features a 210 mAh battery and are great for travel and business trips as well as for kids backpacks. It connects via the Apple Find My app.



CT1802 • 12 Can Convertible Duffel Cooler
Fully insulated, waterproof main compartment holds 12 cans. Cooler lining is removable for multi-use functionality. Two large zippered front pockets for extra storage. Two zippered end mesh pockets. Padded handle wrap and adjustable non-slip shoulder strap.



CT1105 • Crossover Bag
The sleek and spacious crossbody keeps all your essentials with you. Adjustable shoulder strap with quick release buckle.

NEW!



CT1228 • Diamond Pocket Cinch Bag
Has a matte diamond polyester dyed-to-match drawcord closure with adjustable dyed-to-match web straps. Front zippered pocket dyed-to-match hardware. The bottom base helps cinch remain upright when placed on the ground.



CT1103 • Utility Pouch
10 oz. cotton canvas pouch has contrast stitching and a zippered closure with a flat color-blocked bottom.



CT1339 • Drawcord Bag
Made of soft and durable 210 denier polyester fabric with a handy front pocket, double drawcord closure and measures 14" w x 16.5" h.



CT1957 • Sports Pack with Front Zipper
This versatile polyester bag features a drawstring closure, a large front zippered pocket, and a built-in slot for earbuds.



CT1184 • 12 Bit Locking Screwdriver
12-bit screwdriver features 3 Phillips, 3 Flathead, 3 Hex, and 3 Torx metal screw bits with TPR grip and three angle locking handle.



CT1110 • Tape Measure
The 25 foot recycled tape measure is both retractable and locking using standard and metric measurements. This item also includes rubber casing and metal clip on the back.



NEW!

CT1226 • Stubby Screwdriver
At 3.5" long, this tool is small enough to fit into crowded tool boxes, even a pocket or purse. It is a perfect multi-bit screwdriver for hard to-reach-spots and close-quarters.



CT1953 • Doohickey Carabiner Multi-Tool
Made of durable stainless steel and fits in the palm of your hand. TSA-friendly multi-tool with a carabiner, wrench, etched ruler, bottle opener, flat head screwdriver, and a blunt tip box cutter.



CT1185 • First Aid Kit
Portable first aid plastic container, perfect for travel. Includes basic first aid needs, including 4 short bandages, antibiotic ointment, and alcohol pads.



CT1378 • Camo Knife
Lightweight, reliable and single-handed opening option. This multi-purpose knife has several grip points for easy holding, handy pocket clip and lanyard hole.



CT1012 • XTR Titanium Rescue Knife
With the entire knife covered in Titanium coating, it's sure to withstand the harsh tasks and conditions it will face. Originally designed for vehicular extraction, this single-handed opening knife includes a glass breaker tip, seatbelt cutter and pocket clip.



CT1828 • Zippo Lighter
Genuine Zippo windproof Lighter. Refillable for lifetime of use. Made in the USA. Comes packaged in a gift box. Color: Matte Black



CT1829 • Zippo Lighter
Genuine Zippo windproof Lighter. Refillable for lifetime of use. Made in the USA. Comes packaged in a gift box. Color: Chrome



CT1013 • Blaze 2-Tone Camo Knife
All-purpose knife features a drop point blade. Ambidextrous thumb studs for easy single-handed opening. Includes belt clip and nylon carry pouch.

NEW!



CT1227 • Chuckwagon Knife
4.125" wooden handle, 3.25" stainless steel clip point blade. This simple multi-tool comes with a fork/bottle opener as the second blade! Boxed.



CT1978 • Metal Wallet
Secure your cash and cards in this RFID-blocking aluminum and stainless steel wallet. Size: 3.34"L x 2.12"W.



CT1915 • Multi Tool with Flash Light
Deal with everything from quick fixes to emergencies with this multi-tool. This plastic tool features Phillips and flathead screwdrivers, a large and small hex wrench and screwdriver, windshield hammer, seatbelt cutter and powerful COB emergency flashlight that provides 80 lumens of light from three included and replaceable AAA batteries. The light features steady, strobe and zoom emergency modes.

NEW!



CT1238 • Utility Light with Screwdriver
Durable ABS plastic 6 piece screwdriver, 30 luminous LED lights, powered by 3, LR44 button batteries.



CT1099 • Pocket Work Light
The pocket work light illuminates two ways: a focused LED beam on the first click and a strip array with 6 LED bulbs on the second. Magnetic bottom. Requires 3 AAA batteries (included).



CT1100 • Metal Rechargeable Flashlight
15W flashlight features a high-intensity 1200-lumen output. Durable metal body. The included 2000mAh rechargeable battery ensures long-lasting performance.

NEW!



CT1220 • COB Light with Stand
This compact light has an aluminum case that holds a 500 lumens COB light, offering three light modes. It provides up to 2 hours of illumination on a single charge, with a quick 1.5 hour recharge time.

NEW!



CT1208 • Keychain LED Flashlight
The flashlight is small but emits a very bright LED light with two brightness levels and a flashing mode. It also includes a SOS flashlight function as an added safety feature with red and blue light options.
Note: Android devices are not supported.



CT1572 • Maglite Solitaire
Weighing less than 1 ounce and 3 1/4" in length the Maglite Solitaire offers the same precision engineering and craftsmanship found in every Maglite Flashlight. The Solitaire is compact enough to fit conveniently into pockets, purses, and cases. Comes with key ring/lanyard attachment, 1 "AAA" battery and packaged in a sleek, black plastic presentation box. Laser Engrave on barrel. Maglite is a USA Manufacturer.



CT1089 • Cedar Creek Rechargeable Flashlight
6.4" long tactical rechargeable LED flashlight. Five light modes with memory. Waterproof grade. USB-C cable and lanyard included. Boxed. Laser engraved.



CT1190 • COB Light Wand
Three ultra bright LED lights, 2 settings: flashlight and flashing light, rubberized handle and aluminum carabiner. 5.3"h x 0.6" dia.



CT1570 • Safety Light Carabiner
This unique carabiner is made of anodized aluminum, measures 3" long, and is a safety light that you can attach to your backpack or belt loop for quick access to hands-free lighting. This includes a power C.O.B. LED light with three light modes: full power, half power, and flashing strobe.



CT1101 • Phone Cord Holder
3D cable clip for all phones.

NEW!



CT1241 • Powerbank with Watch Charger
2000mAh features built-in charge compatible with iWatch and samsung watches for added convenience



CT1015 • Mouse Pad
Unique surfacing on the plastic top makes for quick and easy movements. Heavy-duty 8"x 8" x 1/16" hard surface mouse pad. Made in the USA.



CT1804 • Wireless Mouse
This wireless mouse displays graphics on the entire top surface. Enjoy comfortable usage from the ergonomically-molded palm rest. Mouse features left and right-click buttons, a click button scroll wheel, and an adjustable DPI that allows users to adjust mouse sensitivity to their liking. Includes 2.4GHZ wireless dongle. 2x AAA batteries included. Retail Gift Box.



CT1788 • Security Webcam Cover
Place over webcam to provide privacy As well as protection for camera lens. Adheres to device with strong adhesive . Attaches to most computers, laptops, smart TV's or monitors. Not recommended for cell phone use. Slide to open/close.



CT1930 • Phone Stand
This durable phone stand is made of ABS plastic and has strong impact resistance. Adjustable to fully folded state.

NEW!



CT1213 • Wireless Power Bank
This ultra thin wireless magnetic power bank is the ultimate power solution to keep you connected and charged! It also has a strong, N52 magnetic attachment for your MagSafe compatible phone so that it stays in place.



NEW!



CT1218 • Portable Wireless Phone Printer
A portable Bluetooth printer. Wirelessly print black-and-white photos, notes, and more with ease. Enjoy up to 4 hours of continuous battery life.

NEW!



CT1206 • Coconut Power Bank
Made with a sustainable coconut exterior with 50% natural coconut fibers and 50% recycled plastic, giving you a device that's as good for the planet as it is for your tech.



NEW!



CT1215 • Light up Dry Erase Board

This set features an 11.8" x 7.87" acrylic dry-erase board, a white dry-erase marker, a beech wood stand with LED lights, and a convenient cleaning cloth. Illuminate your notes using the stand's built-in USB-controlled lights, with a 49" USB cable for flexibility.



CT1956 • Nano Wireless Speaker

A wireless speaker featuring high definition Bluetooth® 3.0 Technology, featuring a built in microphone, LED indicator light and up to 4 hours of play time. Approximate size: 3 1/2" W x 1" H x 1/2" D.



CT1987 • Magnetic Power Bank

The 5000mAh 15W wireless magnetic power bank attaches to the back of your phone and allows you to charge it while in use. It's small, lightweight and composed of ABS and silicone. It has a Type C input and output port so that you can charge another device at the same time.



CT1779 • Diamond Plate Pop Socket

Don't drop your phone in the mud while taking selfies on your machine.



CT1550 • Air Tracker

The air tracker is perfect for keeping up with your personal belongings. It's small, lightweight and can be used on your backpack, purse, keys, luggage, bike, in your wallet and so much more. It can even be used on pet collars! It works with Apple's 'Find My' app. Simply pair it with your device (which takes about 30 seconds), open the app and click 'Play Sound' to locate your item! Note: Android devices are not supported.



CT1094 • Leatherette Pencil Holder

Build your own pencil holders with these specially-built leatherette strips. They can be built to fit your pencil, scissor, or makeup brush storage needs, and can be stored flat when not in use.



CT1551 • Bamboo 4 in 1 Cable

This 4-in-1 cable is not only handy, but great for the environment! The hub is composed of bamboo and the cables are composed of wheat straw. This item has everything you need to connect and charge to a device. It has Type-C and Type A input cables as well as Type-C and lightning output cables (NOTE: this does NOT support PD charging). These are great for charging your mobile device, earbuds, power bank or tablet. This cable is packaged in an eco-friendly corn bag which is 100% biodegradable.

CT1929 • Tilt High Density 5000mAH Power Bank

This power bank is compact enough to fit in your pocket. It includes a USB-to-Type-C charging cable which can recharge the power bank or other devices. Also features a 5,000 mAh/19.25Wh Grade A Lithium Polymer battery with dual outputs and input.



CT1555 • Hex Notebook

Slimline notebook measures 5" x 7" with a brilliant full-color front cover made with a gloss UV coat. 70 sheets of lined paper, black paperboard back cover, and black wire binding.



CT1549 • Neon Hex Journal

Feel the buzz with this 5" x 7" journal that provides a pop of neon yellow color. Includes 32 blank inside pages.



CT1971 • Leather Look Padfolio

The look of leather but not the price. This padfolio includes an 8 1/2" x 11" writing pad with 30 lined pages and a snap closure. It also features card holders, an elastic pen loop, and an inside flap pocket.



CT1097 • Fabrizio Soft Cover Journal

A soft cover, non-refillable journal with a ribbon bookmark and 160 ivory lined pages, perforated inner margins and pages edged to match the notebooks cover. Size: 5" x 8".



CT1939 • 7x10 Medium Image Book Notebook

Full color digitally printed sheet mounted to firm, hard paperboard front cover (in black). Business card pocket inside front cover. 100 sheets stock filler (Lined) Black paperboard back cover. Black wire binding.



CT1568 • Flip Notepad

5" x 7" deluxe notepad with foil logo, 100 sheets of ruled writing paper, and black wire binding.



CT1195 • Silhouette Journal

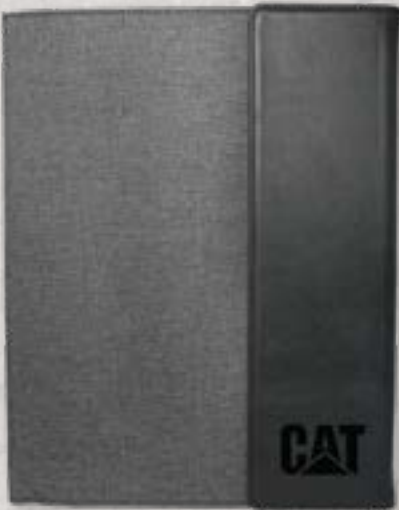
80 page lined notebook with elastic pen loop. Approx. size: 6"W x 7" H/



CT1948 • Stone Notebook

A 5" X 7" spiral notebook that has environmentally friendly paper made from natural stone and cover made from natural cardboard . The paper is resilient and functional: water-proof, tear resistant, and smudge resistant. Contains 65 pages that provide a unusually smooth writing experience.

NEW!



CT1835 • Gray Leatherette Portfolio

Padfolio in grey and black design. The best place to keep your important notes and documents.



CT1032 • Things-To-Do Notepad

Eco-friendly non-adhesive scratch pad, 50 sheet pad, 6" x 9". Every business or household needs one.



CT1194 • Journal with Zipper Pocket

Includes 80 lined sheets, zipper pocket measures approx 5.5" w x 8.26"h. Product Size: 5.7" w x 8.5" h x 0.5" d.



CT1952 • Soft Cover Journal & Pen Set

The perfect journal and stylus pen set. The journal has 96 cream-colored, lined sheets of wide ruled paper, elastic closure and ribbon bookmark. The pen has black ink and medium point.



CT1104 • Camo Padfolio

Zippered portfolio with exterior document and card pockets, internal elastic bands for pens and electronics, internal pockets for cards and documents and an included 8-1/2" x 11" writing pad.



CT1209 • Jr Conference Padfolio

A handy junior conference pad holder with wide pen holder, writing pad, and more. Made from Ultra simulated leather. Measures 5" x 7".



NEW!



CT1935 • Sharpie Roller Pen
Experience a high-performance roller pen with the Sharpie Roller. Engineered for precision, the pen features an arrow point tip with a 0.5mm tip. Black ink.

CT1217 • Metal Chrome Palette Pen
Chrome finish metal barrel, tip and push button. Solid color clip with a glossy finish. Black ink.



CT1924 • Simpatico Pen
Plunger action ballpoint pen with hourglass shape, textured rubber grip and smooth blue ink.



CT1562 • Pencil Set
Brighten your day with these wooden colored pencil sets! Packed inside a kraft-style box comes six genuine wooden colored pencils - red, pink, yellow, green, blue and black.



CT1541 • Vegas Pen
Features a diamond cut grip and plunger action. The medium point pen is an excellent addition to any marketing plan. Black ink.



CT1544 • Logo Top Premier Pen
Metal body with twist action open/close design, writes in black ink.

CT1186 • Spin top pen with stylus
Spin top aluminum pen with plunger action and stylus top. Perfect for reducing stress and boredom and encourages focus.

CT1947 • Ultima Bright Softex Stylus Pen
Features soft touch rubber coating finish that provides a comfortable grip. Mess free and smudge proof.



CT1030 • Contender Pen
An instant favorite at a price everyone can afford. Retractable medium-point ballpoint pen with black ink.



CT1837 • Superball Pen
Give yourself an extraordinary writing experience.



CT1219 • Pen Set
A collection of three ballpoint pens, presented in a one-of-a-kind custom decorated sleeve.



CT1976 • Aqua Pen
Dig your writing experience with the return of the Aqua Pen! Pen measures 5 inches in length and contains a small, molded bulldozer shape suspended in liquid.



CT1945 • Sharpie S-Gel Pen
Experience a high-performance gel pen with the Sharpie S-Gel. With no smear, no bleed technology, and matte finish. 0.7mm medium point.



CT1989 • Hex Pen
Honeycomb pattern, raised grip, and etched plunger. Matte soft touch finish with gunmetal accents. Black ink color.



CT1193 • 4 in 1 Carpenter Stylus Pen
Plunger action, stylus on top, and features a level and 4" ruler.



CT1916 • Contour Golf Divot Tool
Sturdy die cast golf divot repair tool with shiny nickel finish. Contoured handle with molded thumb rest for superior leverage and control. Soft and colorful textured PVC grip. Features an integrated bottle opener top. Includes 1" removable golf ball marker with full color poly dome imprint.

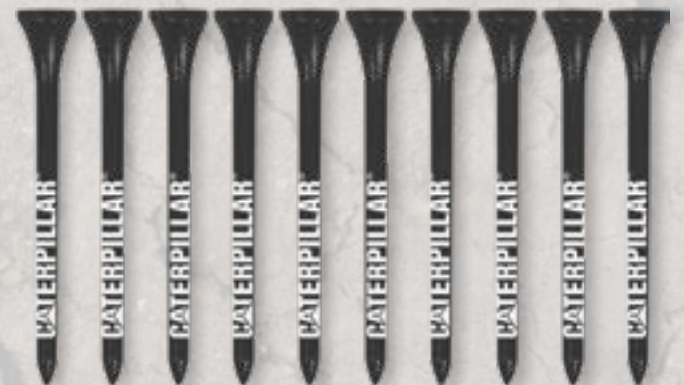
NEW!



CT1216 • Beverage Wrench
It's a bottle opener that contains six 2 1/8" golf tees and features an aluminum carabiner that can easily be attached to bags or belt loops.



CT1311 • Terry Golf Towel
Terry velour. Hemmed lightweight golf towel. Includes corner grommet and hook. Size: 16"x25"



CT1965 • 10 Tall Golf Tees
Ten bamboo 2-3/4" Tees. Polybagged.



CT1959 • Waffle Caddy Golf Towel

This waffle caddy towel measures 17" x 40" and features a black webbed loop so it can hang right on your golf bag.



CT05 • Pinnacle Gold Golf Balls

New Pinnacle Rush is designed with proprietary high-energy core technology that produces fast ball speed for extraordinary distance on all full swing shots. Rush utilizes an advanced icosahedral dimple design with 332 dimples to deliver a consistent, powerful ball flight, while its soft, durable ionomer cover provides great feel. Sold by the dozen.



CT1980 • Square Golf Umbrella

This eye-catching behemoth has a 60" arc, fiberglass shaft and ultra soft EVA handle. Its square shape makes it easy to securely lay on its side (like a lean-to awning) for shade or privacy at the beach or on picnics. The lightest Golf Umbrella available.



CT1647 • Ball Marker Hat Clip/Bottle Opener

Perfect combination hat clip and bottle opener with magnetic ball marker.



CT1278 • OGIO XL (Xtra-Light) 2.0 Golf Bag

With nothing to weigh it down, this stand bag helps you stay organized on the course. Features a 7-way top, full-length club dividers, fleece lined pocket, four point double shoulder strap system, 6 zippered pockets, bottle holster, and rain hood.

NEW!



CT1221 • Golf Poncho

3 1/2" white golf ball shaped holder with a polyethylene poncho that's one size fits all.



CT1406 • Revolution Umbrella

The Revolution! 42" arc auto open, folding umbrella with new Wind Reflex frame. If umbrella inverts, it will come back without damaging the frame of the umbrella.



CT1098 • Sport Auto Open Umbrella

Auto-open folding sport umbrella with oversized 48-inch coverage area. Automatic windproof shaft and color-coordinated finger grip handle with wrist strap.



CT1022 • Treadplate License Plate
The aluminum license plate features a raised treadplate design.



CT01 • Black License Plate
Black license plate with 2-color stamped logo.



CT1154 • Pink License Plate
The aluminum license plate features a pink background with a black Cat logo.



CT1610 • Camo License Plate
Aluminum license plate features camo background with yellow Cat logo.



CT1537 • Trailer Hitch Cover
Rectangular trailer hitch cover that fits standard 2" square receiver.

NEW!



CT1242 • License Plate Frame
Metal license plate frame, measuring 6.25" x 12.25"

NEW!



CT1214 • Magnetic Bumper Sticker
Rectangle vinyl bumper sticker magnet (3" x 9").





CT1925 • Friendly Bunch Puppy
6" open weave stuffed plush with custom branded t-shirt. High quality materials make for a soft touch.

NEW!



CT1204 • Peter Bear
Peter Bear is a soft 9" cream colored bear that is decorated with a logo t-shirt.



CT1233 • Hard Hat Stress Fob
Hard hat shaped polyurethane stress reliever. Size: 2-3/4" x 1-3/4" x 3-1/2".



CT1879 • You Had Me at Yellow PVC Magnet
This brightly colored magnet is flexible, durable and waterproof. 2.5" x 2.0"



CT1990 • Silicone Bracelet
Silicone bracelet sized for an adult. 8" circumference.



CT1232 • Bulldozer Stress Fob
Bulldozer shaped polyurethane stress reliever. Size: 3-5/8" x 2-1/8" x 2-1/8".



CT1274 • Skid Steer Stress Reliever
Skid steer shaped polyurethane stress reliever. Size: 3" x 2" x 2".



CT1111 • Wood Handle BBQ Set
A premium wood handle three-piece BBQ set. The set includes a 16 1/2" turner, 15 3/4" fork and 15 3/4" tong neatly packaged in a gift box with a clear lid.



CT1706 • Sunglasses
Complete your look with these retro sunglasses. Everyone else can wish they were as cool as you!



CT1102 • Sport Binoculars
4 x 30 mm power binoculars feature a rubberized bold color finish with black accents, neck rope and carrying case.



CT1954 • Popper Ball
A wildly-fun and new way to relieve stress, this popper stress ball is great for people of all ages. Go ahead and pop it! You can't resist! Made of squeezably soft silicone.



CT1895 • Round Glossy Shatterproof Ornament
USA Made, 3 1/4" with a glossy finish. Ornaments will be packaged in a Happy Holidays gift box.



CT1985 • Buffalo Plaid Blanket
This fleece blanket is the perfect combination of lightweight, extra soft, warm and stylish. The classic buffalo plaid check pattern offers a fashionable-yet-rustic style. Unfolded, the blanket measures 50"x60" and is made from 180gsm polyester fleece material for an extra soft hand feel and comfort while in use.



CT1002 • Mini Puzzle Cube
Exercise your mind while having fun with our Mini Puzzle Cube! Brightly colored, 9 panels per side. Practice patience, sharpen mental skills and encourage problem solving, plus they provide therapeutic benefits and stress relief.



CT1687 • Tire Tread Playing Cards
Poker, Gin, Rummy! Whatever your game is these playing cards are decked out with custom graphics on the card backs and the box.



CT1574 • Silver Glitter Desktop Photo Frame
The bling's the thing when you transform any photo into a showpiece with this silver glitter desktop picture frame. This 4 1/2" x 1" x 3 3/4" acrylic plastic frame is filled with a clear liquid and glittering silver fragments. Just shake it up like a snow globe to create a dynamic showering show to complement your favorite photograph.

NEW!



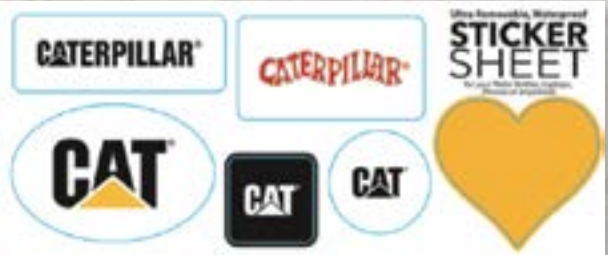
CT1222 • Curved Wood Frame
Wooden frame with curved design, 4" x 6" insert size, black edge, cardboard backing and glass front.



CT1944 • 7" x 11" Sticker Sheet B
Multiple stickers on a 7" x 11" white vinyl sheet with ultra-removable adhesive. Waterproof and fade-resistant.



CT1986 • Heritage Sticker Sheet
Personalize computers, phones, tablets, and more! Ultra-removable white with durable full-color digital imprint. Size: 3.75 x 9.



CT1874 • Sticker Sheet (Size: 3.75 x 9)
Personalize computers, phones, tablets and more! Ultra-removable white with durable full color digital imprint. Size: 3.75 x 9.



CT1995 • Old Service Sign
A little piece of history found on this embossed metal sign. Measures 14" L x 6" W.



CT1191 • Beach Towel
Great for the beach, boating, or any outdoor activity. Size: 28" x 58" Material: 52/48 Poly-Cotton.



CT1196 • Mini Tic-Tac-Toe Game
Made of pine wood, slide out game board for tile storage. Includes 9 tiles and game board. Approx. size: 3"W x 3"H x 1"D.



CT1548 • Bear Baby Blanket

This adorable bear baby blanket measures 18" x 18" and comes in a soft beige color.



CT1557 • Bandana

Square 22" x 22" polyester full-color bandana that is dye sublimated on one side.

NEW!



CT1230 • Construction Duck

The 2.17" x 2.54" construction worker duck is working hard at having fun! Great for event giveaways and for just brightening someone's day!



CT1566 • Towel Chair Clip

This clip firmly attaches your towel to any chair. Make your beach day fuss-free!



CT1197 • 24pc Crayon Set

24 pack crayons.





CT1633 • Hard Hat Key Tag
Classic hard hat shrunk down to fit those keys!



CT1881 • Neoprene Lip Balm Sleeve Pocket with SPF 15 Lip Balm
Pouch has a sewn split ring which includes SPF 15 lip balm in berry.



CT1205 • Popper Keychain
Measuring 6" long, this one size fits most is made from a high grade silicone popper bubble that can be pressed and released to reduce stress.



CT1207 • Porcari Keychain
This 1.25" x 4" fob has a sturdy gunmetal alloy finished construction accented by a polyurethane leather strap.



CT1973 • Value Badge Holder
A 30" retractable badge reel with a metal pocket clip on the back.



CT1243 • Floating Oval Key Tag
Floating oval stress reliever key tag with a convenient chain attachment. This is a great way to hold onto keys and release the day's tension.



CT1938 • Reflective Safety Vest Keytag
This reflective safety vest keytag helps recipients' keys stand out on any bag or purse! Made of reflective PVC material, it features a 1" split keyring with 1 3/8" long metal link chain.

NEW!



CT1223 • Oil Filter Keychain
Replica of the actual oil filter as a handy key chain.



CT1023 • Carabiner Key Tag
A modern aluminum multi functional carabiner key holder. Clips to your belt, backpack, briefcase or purse for easy access.



CT1088 • Vinyl Key Tag
Durable, soft, and flexible Sof-Touch™ Original vinyl with split ring.



CT1815 • Caterpillar Woven Key Strap
A bold and fierce way to carry your keys.



CT1107 • Jumbo Badge Reel
Jumbo round plastic body with stainless steel internal spring, nylon cord length 40", durable vinyl strap. 360 degree, swivel alligator clip back, anti-twist feature.



CT1128 • Pink Lanyard
Fashion meets function! Lanyard with badge clip. Features a breakaway release.



CT1125 • Black Lanyard
Fashion meets function! Lanyard with badge clip. Features a breakaway release.



CT1972 • Value Lanyard
1" Dye-sublimated lanyard with a safety breakaway closure. It also features a premium attachment of the bulldog clip w/vinyl snap.



NEW!



NEW!



CT7226 • Machine Polo

Men's dye sublimated polo shirt with a three button placket, and open hem sleeves. 100% Polyester. 5.4 oz. Sizes: S-3XL.

CT7227 • Ladies Machine Polo

Ladies' dye sublimated polo shirt with a three button placket, and open hem sleeves. 100% Polyester. 5.4 oz. Sizes: S-2XL.



CT7322 • Dozer Polo

Wear your dye sublimated, high performance fabric polo to your next fun event. Features: Neck taping-self material collar, three button placket, and open hem sleeves. Sizes: S-3XL.

CT7323 • Dozer Ladies Polo

Wear your dye sublimated, high performance fabric polo to your next fun event. Features: Neck taping-self material collar, three button placket, and open hem sleeves. Sizes: S-2XL.



CT7308 • Dade Short Sleeve Polo Shirt
The versatile polo shirt has a classic look that never goes out of style. It offers great performance with breathable fabric, a wicking finish, UV protection, snag-resistance and wash-and-wear convenience. This version features a three-button placket with dyed-to-match buttons as well as shaped seams and a tapered waist for a flattering fit. Color: Black Sizes: S-3X.



CT7309 • Ladies Dade Short Sleeve Polo Shirt
The versatile polo shirt has a classic look that never goes out of style. It offers great performance with breathable fabric, a wicking finish, UV protection, snag-resistance and wash-and-wear convenience. The women's style has a five-button placket, as well as shaped seams and a tapered waist for a flattering fit. Color: Black Sizes: S-2X.



CT7310 • Shadow Tonal Heather Polo Shirt
This polo shirt is made of 100% polyester heathered wicking knit top body, collar and sleeves; wicks moisture away from the body. Also features three matching buttons with cross-stitching. Color: Silver Sizes: S-3X.



CT7311 • Ladies Shadow Tonal Heather Polo Shirt
This polo shirt is made of 100% polyester heathered wicking knit top body, collar and sleeves; wicks moisture away from the body. Also features three matching buttons with cross-stitching. Color: Silver Sizes: S-2X.

NEW!



CT7232 • Pique Polo
Men's moisture-wicking performance pique colorblock polo. Snag-resistant, anti-curl flat knit collar, with side vents and a drop tail hem. 4.4 oz., 100% polyester pique. Sizes: S-3XL.

NEW!



CT7233 • Ladies Pique Polo
Ladies' moisture-wicking performance pique polo. Snag-resistant, anti-curl flat knit collar, 5-button placket front, with a curved drop tail hem. 4.4 oz., 100% polyester pique. Sizes: S-2XL.



CT7216 • Prism Polo
Dry-Excel™ 4.8 ounce 100% polyester wicking honeycomb knit. Garment protects against the sun with 50+ UPF. Sizes S-3XL.



CT7279 • Crownlux Performance polo
5.1 oz. 100% polyester with moisture-wicking performance. Dual-sided mesh pique knit constructed of fine denier wicking polyester on the outside and soft-as-cotton wicking blend on the inside. Color Options: Black, White, French Blue. Sizes: S-3XL.



NEW!



NEW!



CT7209 • Fusion Colorblock Polo

Made of 100% polyester pique, moisture-wicking, and antimicrobial. Soft cotton-feel performance. Has a self-fabric collar and integrated collar stays, and a three button placket. Color: Black/Carbon Heather. Sizes: S-3XL.

CT7210 • Ladies Fusion Colorblock Polo

Made of 100% polyester pique, moisture-wicking, and antimicrobial. Soft cotton-feel performance. Has a self-fabric collar and integrated collar stays, and a v-neck placket. Color: Black/Carbon Heather. Sizes: S-2XL.

CT7016 • Easy Care Shirt - Short Sleeve

4.5 ounce, 55% cotton/45% polyester. Wrinkle resistant. Comfortable for wash and wear. Dyed-to-match buttons. Color Options: Burgundy, Black, Dark Green. Sizes: S-6XL.

CT7243 • Stripe Sleeve Polo

Men's black 100% polyester polo with horizontal silver stripes on sleeves. 5 oz. Sizes: S-3XL.

CT7244 • Ladies Stripe Sleeve Polo

Ladies' black 100% polyester polo with horizontal silver stripes on sleeves and a ¼ zip placket with a self collar. 5 oz. Sizes: S-2XL.



CT7015 • Ladies Easy Care - Long Sleeve

4.5 ounce, 55% cotton/45% polyester. Wrinkle resistant. Comfortable for wash and wear. Dyed-to-match buttons. Adjustable cuffs. Tailored for a feminine fit. Open collar design. Color Options: Burgundy, Black, Dark Green. Sizes: S-2XL.



CT7017 • Easy Care Shirt - Long Sleeve - Tall Sizes Available

4.5 ounce, 55% cotton/45% polyester. Wrinkle resistant. Dyed-to-match buttons. Adjustable cuffs. Color Options: Burgundy, Black, Dark Green. Sizes: S-6XL.

CT7014 • Ladies Easy Care - Short Sleeve

4.5 ounce, 55% cotton/45% polyester. Wrinkle resistant. Comfortable for wash and wear. Dyed-to-match buttons. Tailored for a feminine fit. Open collar design. Colors Options: Burgundy, Black, Dark Green. Sizes: S-2XL.



CT7222 • Clique Jersey Polo

100% spin dye polyester pique. Rib knit collar. Fully taped neck seam. Open sleeves. Color Options: White, Black, Red, Pure Slate, & Dark Navy. Sizes: S-3XL.



CT7203 • Clique Jersey Ladies Polo

100% spin dye polyester pique. Rib knit collar. Fully taped neck seam. Open sleeves. Color Options: White, Black, Red, Pure Slate, & Dark Navy. Sizes: S-2XL.



NEW!



NEW!



CT7228 • Hawaiian Button Up

Men's dye sublimated button up, open hem sleeves with left chest pocket. 100% woven RPET polyester. Sizes: S-3XL.

CT7229 • Ladies Hawaiian Button Up

Ladies' dye sublimated button up, open hem sleeves with left chest pocket. 100% woven RPET polyester. Sizes: S-2XL.

CT7317 • OGIO Accelerator Polo

Gear up for adventure in this polo energized with rib knit panels under the arms and an angled zippered pocket on the right chest. Includes 3-snap placket with debossed logo metal snaps. Color: Diesel Grey/ Blacktop. Sizes: S-3XL.

CT7253 • Ladies Cotton Touch Performance Polo

5.7 ounce. 95/5 poly/spandex jersey. A polyester polo that performs with the comfortable feel of cotton. Manages moisture and keeps you fresher with eco-friendly odor-controlling technology. Open Y-neck placket. Sizes: S-2XL.



NEW!



NEW!



CT7246 • Smooth Touch Polo

Men's soft touch moisture wicking polo with reflective back neck piping. Sizes: S-3XL.

CT7255 • Smooth Touch Ladies Polo

Ladies' soft touch moisture wicking polo with reflective back neck piping. Sizes: S-2XL.

CT7315 • Avenger Polo

100% polyester wicking horizontal textured stripe knit with snag resistant technology. Three matching buttons and contrast color inserts with raglan sleeves. Color: Black/Light Gold. Sizes: S-3XL.

CT7316 • Ladies Avenger Polo

100% polyester wicking horizontal textured stripe knit with and snag resistant technology. Ladies' fit with a contoured bottom, raglan sleeves, and contrast color inserts. Color: Black/Light Gold. Sizes: S-2XL.

CT7266 • Ladies Shawl Collar Cardigan

5 oz. 58% cotton, 39% modal, 3% spandex jersey. Long length, princess seam, non-cling soft modal fabric. One button closure with lower pockets. Sizes: S-2XL.



NEW!



NEW!



CT6010 • Machine Tee

50/50 cotton/polyester. Pre-shrunk. Advanced moisture-management performance.
Sizes: S-3XL.

CT6022 • Working Together Tee

50/50 cotton/polyester. Pre-shrunk. Advanced moisture-management performance.
Sizes: S-3XL.



CT6274 • Block C Baseball Tee

A three-quarter sleeve baseball tee that is pre-shrunk, has a retail-fit, and unisex sizing. Sizes: S-3XL.

CT6275 • 1925 Tradition Tee

Made of soft style, ring-spun cotton. A modern-fit with narrow width and ribbed collar. Sizes: S-3XL.





CT6052 • Black Reflective Tee
A soft cotton hand merges with color-locking, moisture-wicking performance in this tee that also has a matte finish. Made with 100% spun polyester jersey with PosiCharge technology. Color: Black Sizes: S-3XL.



CT6055 • Safety Orange Reflective Tee
50/50 cotton/polyester. Featuring advanced moisture-management performance material that is noticeably softer hand and excellent printability. Color: Safety Orange Sizes: S-3XL.



CT6276 • Diesel Dude Tee
A soft style lightweight t-shirt that offers a modern-classic fit, narrow width, and ribbed collar. Sizes: S-3XL.



CT6277 • Diesel Dude Ladies Tee
A soft style women's lightweight t-shirt that offers a semi-fitted and narrow width look. Sizes: S-2XL.



CT6018 • Black Flag Tee
5.4 oz. 100% pre-shrunk ring-spun cotton. Double needle stitching on neck, sleeves, and bottom hem. Shoulder to shoulder taping. Color: Black Sizes: S-3XL.



CT6057 • See Yellow Tee
100% ring-spun cotton with a modern-classic fit. Taped neck and shoulders for comfort and durability. Color: Black Sizes: S-3XL.



CT5006 • Groovy Ladies T-Shirt
100% softstyle, lightweight, combed ring-spun cotton t-shirt. Semi-fitted with side seams and tear-away label. Color: White Sizes: S-2X.



CT6273 • Dozer Life Tee
6.1 oz., 100% soft spun cotton essential tee. 1x1 rib knit collar. Shoulder to shoulder back neck tape. Sizes: S-3XL.



CT6272 • Women in Construction Tee
Relaxed-fit, 4.3 oz., 60/40 combed ring-spun cotton/poly. 1x1 rib knit neck. Shoulder to shoulder taping. Sizes: S-2XL.



CT6253 • Block C Caterpillar T-Shirt
60% combed ring-spun cotton/40% polyester jersey t-shirt that is slightly heathered. Tear-away label. Color: Charcoal Sizes: S-3X.



CT6254 • Ladies Block C Caterpillar T-Shirt
60% combed ring-spun cotton/40% polyester jersey t-shirt that is slightly heathered. Tear-away label and side seamed. Color: Charcoal Sizes: S-2X.



CT6185 • Performance Tee
3.8 oz. 100% polyester interlock with moisture-wicking and UV protection performance. Sizes: S-3XL.



CT6186 • Ladies Vneck Performance Tee
3.8 oz. 100% polyester interlock with moisture-wicking and UV protection performance. Sizes: S-2XL.



CT6014 • Cat Flag Tee
Essential cotton tee. Shoulder to shoulder back neck tape. Removable tag for comfort. Color: Jet Black Sizes: S-3XL.



CT6015 • Ladies Cat Flag Tee
Ladies' essential cotton tee. Shorter cut through the body and sleeves for a more feminine fit. Color: Jet Black Sizes: S-2XL.



CT6012 • Big Yellow Machine Tee
100% ring-spun cotton with a modern-classic fit. Taped neck and shoulders for comfort and durability. Color: Heather Grey Sizes: S-3XL.

NEW!



CT6029 • Heavy Equipment Tee
100% ring-spun cotton. Modern-classic fit. Sizes: S-3XL.



CT6044 • Made in 1925 Tee
100% ring-spun cotton with a modern-classic fit. Taped neck and shoulders for comfort and durability. Color: Heather Grey Sizes: S-3XL.

CT6045 • Iconic Tee
100% ring-spun cotton with a modern-classic fit. Taped neck and shoulders for comfort and durability. Color: Black Sizes: S-3XL.



CT6033 • Diesel Power Tee
Classic-fit ultra cotton t-shirt. 100% preshrunk softstyle fabric. Sizes: S-3XL.



CT6039 • Dozer Sunset Tee
65/35 polyester/cotton. Modern-classic fit. Sizes: S-3XL.



CT6231 • Cat Diesel Power T-Shirt
Semi-fitted, lightweight t-shirt made from 100% preshrunk combed ring-spun cotton. Sizes: S-3XL.

CT6232 • Block C T-Shirt
Semi-fitted, lightweight t-shirt made from 100% preshrunk combed ring-spun cotton. Sizes: S-3XL.

CT6248 • Smooth Operator T-Shirt
Soft combed ring-spun fabric. Semi-fitted body with a back tear-away label. Sizes: S-3XL.



CT6250 • Build More, Dig More T-Shirt
Soft combed ring-spun fabric. Semi-fitted body with a back tear-away label. Sizes: S-3XL.



CT6060 • Diesel in the Morning Tee
60/40 heathered cotton and polyester blend. Double-needle open hem. Sizes: S-3XL.



NEW!



CT6034 • Vintage Washed Tee
55/45 polyester/cotton vintage washed jersey. Sizes: S-3XL.

NEW!



CT6035 • Ladies Vintage Washed Tee
52/48 polyester/cotton vintage washed jersey. Relaxed-fit. Drop shoulder construction. Sizes: S-2XL.

NEW!



CT6063 • Signature Color Ladies Tee
100% airlume combed and ring-spun cotton. Woman's pre-shrunk relaxed-fit tee. Sizes: S-2XL.

NEW!



CT6061 • Earthmoving Era Ladies Tee
100% airlume combed and ring-spun cotton. Woman's pre-shrunk relaxed-fit tee. Sizes: S-2XL.



CT6249 • Good Vibrations T-Shirt
100% cotton fabric with double-needle sleeve and bottom hems. Classic-fit body with a back tear away label. Sizes: S-3XL.



CT6002 • Cat® Parts Tee
4.5 oz./yd² (US) 7.2 oz./L yd (CA), 100% ring-spun cotton, 30 singles. Modern-classic fit. Tear-away label. Taped neck and shoulders for comfort and durability. Narrow width, rib collar. Sizes: S-3XL.

NEW!



CT6030 • Ladies Star Print Tee
60/40 combed ring-spun cotton/polyester printed stars vintage fine jersey. Semi-fitted. Sizes: S-2XL.

NEW!



CT6062 • Yellow Iron Ladies Tee
52/48 airlume combed and ring-spun cotton/polyester. Pre-shrunk and relaxed-fit tee. Sizes: S-2XL.



CT6005 • Black Tagless Design Mark Tee
Classic-fit ultra cotton t-shirt. 100% preshrunk softstyle fabric. Sizes: S-3XL.



CT6007 • White Tagless Design Mark Tee
Classic-fit ultra cotton t-shirt. 100% preshrunk softstyle fabric. Sizes: S-3XL.



CT6233 • Dark Grey Design Mark Tagless Tee
Classic-fit ultra cotton t-shirt. 100% preshrunk cotton. Sizes: S-3XL.



CT6046 • Stripe Dozer Tee
100% ring-spun cotton with a modern-classic fit. Taped neck and shoulders for comfort and durability. Color: Black Sizes: S-3XL.



CT6271 • Jersey
Charge into the season with this featured jersey. Made of Dry-Excel™ 100% polyester wicking knit, V-neck. Double elbow and double shoulder construction with set in sleeves. Sizes: S-3XL.



CT6008 • Gold Tagless Design Mark Tee
Classic-fit ultra cotton t-shirt. 100% preshrunk softstyle fabric. Sizes: S-3XL.



CT6011 • Ladies Candy Pink Tee
100% cotton tee with a seamless collar, double needle stitching and taped neck and shoulders. Sizes: S-2XL.



CT6009 • Grey Tagless Design Mark Tee
Classic-fit ultra cotton t-shirt. 100% preshrunk softstyle fabric. Sizes: S-3XL.



CT6006 • 1925 Tee
4.5 oz./yd², pre-shrunk 100% USA grown ring-spun cotton, 30 singles. Modern-fit, tear-away label, set-in narrower ribbed collar, and shoulder-to-shoulder taping. Sizes: S-3XL

NEW!



CT6024 • Danny Diesel Tee
55/45 polyester/cotton vintage washed jersey. Sizes: S-3XL.



CT6047 • Trusted Since 1925 Tee

100% ring-spun cotton with a modern-classic fit. Taped neck and shoulders for comfort and durability. Color: Graphite Heather Sizes: S-3XL.

CT6053 • Safety Yellow Reflective Tee

A soft cotton hand merges with color-locking, moisture-wicking performance in this tee that also has a matte finish. Made with 100% spun polyester jersey with PosiCharge technology. Color: Neon Yellow. Sizes: S-3XL.

CT6003 • Black Basic Pocket Tee

Basic pocket tee made of 100% cotton with a double needle sleeve and bottom hem. Sizes: M-2XL.

CT6004 • Grey Basic Pocket Tee

Basic pocket tee made of 100% cotton with a double needle sleeve and bottom hem. Sizes: S-2XL.



CT6267 • Safety Orange Block C Tee

Dri-Power® 50/50 T-shirt, preshrunk with a noticeably softer hand. Color: Safety Orange. Sizes: S-3XL.

CT6266 • Safety Green Block C Tee

Dri-Power® 50/50 T-Shirt, preshrunk with a noticeably softer hand. Color: Safety Green. Sizes: S-3XL.

CT6048 • Dozer Treeline Tee

100% ring-spun cotton with a modern-classic fit. Taped neck and shoulders for comfort and durability. Color: Heather Navy Sizes: S-3XL.

CT6269 • Today's Work Tomorrow's Pride Tee

100% combed ring-spun cotton that for a soft touch. A modern-classic fit. Color: Heather Grey. Sizes: S-3XL.



CT6050 • Ladies Puff Print Tee

Women's relaxed-fit jersey tee with puff print decoration. Made of 100% Airlume combed and ring-spun cotton, pre-shrunk, relaxed-fit, and side seams. Color: Light Violet. Sizes: S-2XL.

CT6016 • LS Military Green Flag Tee

There is no better way to show off your pride than this military green long sleeve t-shirt. 100% Ultra Cotton. Sizes: S-3XL.

CT6049 • Ladies Block C Tee

Women's relaxed-fit jersey tee. Made of 100% Airlume combed and ring-spun cotton, pre-shrunk, relaxed-fit, and side seams. Color: Lavender Blue. Sizes: S-2XL.



CT6051 • Ladies Hard Hat Hair Tee

100% ring-spun cotton, semi-fitted, narrow width with rib collar. Color: White Sizes: S-2XL.

CT6017 • Flag Tee Black

Semi-fitted with shoulder-to-shoulder taping. 4.3 oz. 100% preshrunk combed ring-spun cotton. Color: Black Sizes: S-3XL.

CT6056 • Been There Dug That Tee

100% ring-spun cotton with a modern-classic fit. Taped neck and shoulders for comfort and durability. Color: True Red Sizes: S-3XL.





CT6241 • Vintage Camo Jersey Tee

Vintage camo jersey made of 100% combed ring-spun cotton fine jersey. Ribbed knit collar and side seams. Sizes: S-3XL.



CT6242 • Vintage Camo Long Sleeve Tee

Vintage camo long sleeve tee made with a 4.5 oz., 100% combed ring-spun cotton. Droptail with side vent construction. Sizes: S-3XL.



CT6243 • Ladies Vintage Camo Fine Jersey Tee

Ladies vintage camo fine jersey tee made with a 4.5 oz. 100% combed ring-spun cotton fine jersey with side seams. Sizes: S-2XL.



CT5024 • Jogger

Unisex premium jogger pants. These offer optimal comfort, crafted with 80% ring-spun cotton and 20% polyester. Includes practical elements like three pockets, ribbed cuffs, and a drawstring waist. Color: Black. Sizes: S-2XL.



CT5026 • Ladies Jogger

Ladies' fitted joggers set you up with warmth without the bulk. Providing lightweight warmth and a slim, flattering, yet comfortable fit. The handy pockets are great for storing essentials. Color: Black Sizes: S-2XL.



CT7173 • Open Bottom Sweatpant

8.0 oz. 50/50 cotton/polyester. Continuous loop drawcord. Double-needle stitched hemmed leg openings. Sizes: S-2XL.

NEW!



CT6040 • Ladies Hooded Sweatshirt

80% organic combed ring-spun cotton/20% recycled polyester brushed 3-end fleece. Dropped shoulders. Medium fit. Sizes: S-2XL.

NEW!



CT6038 • Flag Hoodie

60/40 heathered cotton and polyester blend. Double-needle open hem. Sizes: S-3XL.



NEW!



CT6031 • Flannel Pants

100% double-brushed cotton flannel. Regular fit. Functional button fly. Self-elastic folded waistband with an inner drawcord. Inner side seam pockets. Sizes: S-3XL.



CT5000 • Ladies Fleece Hooded Sweatshirt

Classic-fit with unlined hood and matching drawcord. Includes ribbed-knit cuffs and waistband with a curved high-low hem with a slit detail. Color: Dusty Olive. Sizes: S-2XL.



CT4049 • Fleece Pullover Hoodie
A unisex sponge fleece pullover hoodie that has a retail-fit, and kangaroo pockets. Sizes: S-3XL



CT5004 • Hoodie Sweatshirt
50/50 cotton/polyester fleece. Double lines hood with grommets and matching draw cord. Pouch pocket. Set in sleeves. Sizes: S-3XL



CT6043 • Long Sleeve Tee
Classic-fit made of 100% cotton, double needed collar and bottom hem with a neck and shoulder tape. Sizes: S-3XL



CT6262 • Block C Hooded Sweatshirt
A fleece pullover hooded sweatshirt made of 50% cotton and 50% polyester. Double-needle coverseaming on neck, armholes and waistband, seamless body with set-in sleeves; virtually pill-free! Don't forget about the pouch pocket; double-ply hood with grommets and matching drawcord. Color: Black. Sizes: S-3XL



CT6259 • Hooded Cardigan
This cardigan is soft and perfect for layering. Made of 50/25/25 poly/combed ring-spun cotton/rayon and has an angled front hem and back neck taping. Color: Black Frost. Sizes: S-2XL



CT4044 • Nike Mens Fleece 1/2 Zip
8.3 oz., 80/20 cotton/polyester with a zip-through collar, dyed-to-match zipper, front pouch pocket, and rib knit cuffs and hem. Contrast embroidered Swoosh logo on left sleeve. Sizes: S-3XL



CT4045 • Nike Ladies Fleece 1/2 Zip
8.3 oz., 80/20 cotton/polyester with a zip-through collar, dyed-to-match zipper, front pouch pocket, and rib knit cuffs and hem. Contrast embroidered Swoosh logo on left sleeve. Sizes: S-2XL



CT6013 • Puff Print Crewneck
Softstyle crewneck sweatshirt. Dropped shoulder, double-needle topstitching throughout. Tubular body, with a classic-fit. Color: Black Sizes: S-3XL



CT4029 • Bomber Jacket
100% polyester fabric with water resistant coating. Welt pockets & tear-away label. Color: Black Sizes: S-3XL



CT6120 • Historical Hoodie
8 oz. 50/50 cotton/poly blend with pouch pocket, double needle coverseaming on neck, arm holes, and waistband. Sizes: S-3XL



CT5023 • Willow Scallop Hem Hoodie
60% cotton/40% polyester fleece that is midweight, everyday activewear hoodie with a waist-length hem. Has a slightly oversized fit with drop shoulder, half-zip pullover with metal zipper, and a four-panel hood and kangaroo pocket. Features fitted styling for a more feminine look, that also includes a rib-knit cuff with thumbholes. Color: Navy Sizes: S-2XL.



CT4137 • College Hoodie
8.3 oz. 80% ring-spun cotton, 20% polyester midweight fabric. Double fabric hood. Small hidden opening for earphone cord feed inside kangaroo pouch pocket with hidden earphone loops inside collar. Size: S-3XL.



CT5003 • Bristol 1/4 Zip Sweater
100% polyester anti-pill sweater fleece. Center front coil zipper with semi-autolock slider and rubber pull. Raglan sleeves. Color: Grey Sizes: S-3XL



CT4157 • Ladies Epic 1/4 Zip Sherpa
Supersoft fabric inside and outside of garment. Self-fabric collar. Set-in sleeves, side-seam waist vents and quarter-zip placket. Sizes: S-2XL.



CT6027 • Ladies Cozy Fleece Hoodie
100% polyester faux shearling fleece. Drop shoulder. Sizes: S-2XL.

NEW!



NEW!



CT6023 • Danny Diesel Sweatshirt

80/20 ring-spun cotton/polyester. Garment-dyed for that lived in feel and almost no shrinkage at home. Relaxed-fit. Sizes: S-3XL.

CT5022 • Spliced Crewneck

100% cotton corded terry with a crew neck pullover that has a eye-catching side-slit detailing. Oversized fit with drop-shoulder, high-low exaggerated hemline, rib-knit cuff and hem. Garment Care: For best washing results, turn inside out. Color: Oat Sizes: S-2XL.

CT7170 • Bright Pink Hooded Sweatshirt

7.5 oz. 50/50 cotton/polyester. Pill resistant. Double lined hood with matching drawstring. Sizes: S-3XL.

NEW!



CT6037 • Block C Hoodie

Vintage heather fleece body. Jersey-lined hood. 60/40 cotton/poly. Sizes: S-3XL.

CT5027 • Ladies Quarter Zip Pullover

High performance moisture wicking fabric. Full dye sublimation. Quarter zip closure, open hem sleeve. 90/10 Sport Blend fabric. Color: Black Sizes: S-2XL.

CT5028 • Quarter Zip Pullover

High performance moisture wicking fabric. Full dye sublimation. Quarter zip closure, open hem sleeve. 90/10 Sport Blend fabric. Color: Black Sizes: S-3XL.





NEW!



CT4038 • Dri-Duck Puffer Jacket
Men's soft shell puffer jacket that is water resistant. Adjustable cuffs and zippered hand pockets. 90/10 polyester/spandex. 100% polyester channel puffer with 3 oz. polyfill. Sizes: S-3XL.



CT5001 • Fleece Crew Sweatshirt
Statement Fleece Crew Sweatshirt. Contrast, super-stretch rib trim cuffs and bottom band with side seam construction. 60% combed ring-spun cotton, 40% polyester 3-end fleece. Color: Coyote Brown/Black Sizes: S-3XL.

NEW!



CT6028 • Fleece Crewneck
54/40/6 poly/combed ring-spun cotton/rayon. Raglan sleeves. Sizes: S-3XL.



CT6197 • Street Zip Jacket
A versatile and stylish addition to your wardrobe made with 100% polyester double-knit fabric for exceptional comfort and resilience. Sizes: S-3XL

NEW!



CT6065 • Crème Hoodie
8.4 ounce, 80/20 ring-spun cotton/poly. Classic-fit. Machine washable, inside out with neutral colors. Sizes: S-3XL

NEW!



CT6032 • Made For Digging Hoodie
50/50 cotton/polyester. Classic-fit. Pouch pocket. Sizes: S-3XL.

NEW!



CT4042 • Baseball Ladies Full Zip
Ladies New Era® full-zip French terry baseball jacket. Contrast rib knit collar and cuffs. Sizes: S-2XL.

NEW!



CT4041 • Baseball Full Zip
Men's New Era® full-zip French terry baseball jacket. Contrast rib knit collar and cuffs. Sizes: S-3XL.



NEW!



CT6036 • Perfect Quarter Zip

70/26/4 Rayon/polyester/spandex. Relaxed-fit. Straight bottom hem. Sizes: S-3XL.

NEW!



CT4039 • Eddie Bauer Hooded Full Zip

Men's sporty full-zip midweight jacket with smooth-faced fleece and stretch side panels. Zippered pockets. 7.7 oz., 100% polyester diamond dobby fleece with 88/12 poly/spandex side panels. Sizes: S-3XL.



CT6234 • Adidas 3 Stripe Quarter Zip Pullover

100% recycled polyester, waffle texture knit construction, moisture management properties, self-mock collar, open hem sleeves, bold 3-stripes on right chest. Sizes: S-3XL.



CT4033 • Full Zip Jacket

100% polyester wicking double knit mesh texture with front zip pockets. Sizes: S-3XL.

NEW!



CT6025 • Dri-Duck Melange Pullover

100% polyester melange heather fleece. Anti-pill interior and exterior. Anti-static finish. UPF 50+ protection. Sizes: S-3XL.

NEW!



CT6026 • Dri-Duck Melange Ladies Pullover

100% polyester melange heather fleece. Anti-pill interior and exterior. Anti-static finish. UPF 50+ protection. Sizes: S-2XL.

NEW!



CT4034 • Reversible Jacket

Men's 2-in-1 insulated jacket with a quilted diamond reversible jacket. Polyester exterior and a reversible cotton poly flannel interior. Water resistant exterior free and a tasteful plaid pattern on reversible interior. Exterior is 100% recycled polyester water resistant coating. The interior is 60% cotton and 40% polyester woven flannel. Insulation is made of 100% recycled polyester. 6 oz. Sizes: S-3XL.



NEW!



CT4035 • Ladies Reversible Jacket

Ladies' 2-in-1 insulated jacket with a quilted diamond reversible jacket. Polyester exterior and a reversible cotton poly flannel interior. Water resistant exterior free and a tasteful plaid pattern on reversible interior. Exterior is 100% recycled polyester water resistant coating. The interior is 60% cotton and 40% polyester woven flannel. Insulation is made of 100% recycled polyester. 6 oz. Sizes: S-2XL.





CT4036 • 3 in 1 Jacket
Men's water-repellant jacket with removable hood inspire 3-in-1 jacket with insulated liner. Polyester taffeta lining with 100% polyester woven the inner jacket. Sizes: S-3XL.

CT4037 • Ladies 3 in 1 Jacket
Ladies' water-repellant jacket with removable hood inspire 3-in-1 jacket with insulated liner. Polyester taffeta lining with 100% polyester woven the inner jacket. Sizes: S-2XL.



CT5012 • Ladies Rain Shell Jacket
Lightweight rain jacket perfect for transitional weather. Made of 100% polyester that is waterproof and breathable. Featuring 2-way smooth-faced poly coil zipper, zippered welt pockets with waterproof smooth-faced zipper as well as adjustable shock cord at hood and hem. Color: Grey Sizes: S-2XL.



CT5013 • Rain Shell Jacket
Face the elements in this breathable and waterproof rain shell. Made from lightweight, 100% polyester. Features include 2-way smooth-faced poly coil zipper, zippered welt pockets with waterproof smooth-faced zipper, hook and loop closure on cuffs as well as shock cord at hood and hem with toggles for adjustability. Color: Grey Sizes: S-3XL.



CT5011 • Full Zip Sweatshirt
This pullover thrives in versatility and comfort. Crafted with a 50/50 cotton/poly fleece blend, this hoodie promises a soft, pill-resistant finish. It's designed for durability with air jet yarn and practical with a front pouch pocket. Color: Jet Black Sizes: S-3XL.



CT5015 • Hyannis Shacket
Equal parts sweatshirt and jacket come together for a casual, elevated look. This heathered fleece snap shacket is great for transitional weather. Brushed fleece on the inside for added softness and warmth. Color: Heather Grey Sizes: S-3XL.



CT5058 • Value Fleece Vest
7.7 ounce. 100% polyester. Features fleece chin guard, concealed brushed tricot-lined lower pockets, audio port access through inside pocket. Sizes: S-3XL.



NEW!



CT6208 • Grey Authentic Hoodies

Classic-fit ultra cotton t-shirt. 100% preshrunk softstyle fabric. Sizes: S-3XL.



CT4040 • Letterman Jacket

Men's insulated letterman jacket with comfortable wool-like polyester and a warm quilted lining. Detachable hood adds versatility. Interior pocket, rib knit collar, cuffs and hem. Sizes: S-3XL.



CT5020 • Ladies Construction Sweatshirt

Made with up to 5% recycled polyester from plastic bottles. Patented, low-pill, high-stitch density fleece. Ribbed cuffs and waistband. Color: Stonewash Green Sizes: S-2XL.



CT4046 • Dri-Duck Fleece Hooded Pullover

11 oz., 80/20 cotton/polyester fleece. Three-piece hood. Textured thermal-lined hood. Articulated elbows. Flat ribbed knit cuffs, hem, and v-notch. Sizes: S-3XL.



CT4047 • Dri-Duck Quarter Zip

10 oz., 60/40 cotton/polyester fleece. 100% polyester thermal waffle knit three-piece hood lining. Ribbed knit cuffs and hem. Water-repellent finish. Metal center front zipper. Snap closure, front pouch hand pockets. Sizes: S-3XL.



CT5005 • Caterpillar Machine Hoodie

70% combed ring-spun cotton/ 30% polyester blended hoodie. Our 9 oz. hoodie has a double fleece lined hood and front pouch pocket. Color: Heather Grey Sizes: S-3XL.





CT4021 • Duck Brown Soft Shell Jacket
100% cotton canvas shell with a DWR finish bonded to a water-resistant film insert and 100% polyester microfleece lining. Three interior pockets and adjustable metal snaps at cuffs. Sizes: S-3XL.



CT7290 • Ladies Grey/Black Plaid Flannel Shirt
This flannel shirt takes laid-back looks to the next level. Ultra soft and just the right weight, it makes a statement with a classic plaid pattern and casual comfort. Lightly brushed for softness. Sizes: S-2XL.



CT7289 • Grey/Black Plaid Flannel Shirt
This flannel shirt takes laid-back looks to the next level. Ultra soft and just the right weight, it makes a statement with a classic plaid pattern and casual comfort. Lightly brushed for softness. Sizes: S-3XL.



CT7318 • Ladies Twill Shirt
The ladies' twill shirt excels in style and function. Crafted from a 55/45 cotton/poly blend, this shirt is wrinkle and stain-resistant, featuring bust darts, back shoulder pleats, and an open collar for a flattering fit. Color: White, Black, Sterling Grey, and True Navy. Sizes: S-2XL.



CT7319 • Twill Shirt
This twill shirt ensures top-notch durability and style. Crafted from a 55/45 cotton/poly blend, this shirt is wrinkle and stain resistant, featuring a button-down collar, back shoulder pleats. Colors: White, Black, Sterling Grey, and True Navy. Sizes: S-3XL.



CT7306 • Knit Half Zip
With a subtle and stylish textured pattern, this piece is sure to turn heads wherever you go. Inherent moisture-wicking and breathable fabric keep you cool and comfortable, while the chin guard keeps the zipper from irritating your neck and chin. UPF 40+ protection for sun safety. It's even snag-resistant so you can wear it again and again. The real challenge with this versatile half-zip is finding a place you can't wear it. Color: Heather Dark Charcoal Sizes: S-3X.



CT7307 • Ladies Knit Half Zip
With a subtle and stylish textured pattern, this piece is sure to turn heads wherever you go. Inherent moisture-wicking and breathable fabric keep you cool and comfortable, while the chin guard keeps the zipper from irritating your neck and chin. UPF 40+ protection for sun safety. It's even snag-resistant so you can wear it again and again. The real challenge with this versatile half-zip is finding a place you can't wear it. Color: Heather Dark Charcoal Sizes: S-2X.



CT5010 • Ladies Full Zip Sweatshirt
Stay warm and comfortable in style with this ladies core fleece full-zip hooded sweatshirt. It features a double-needle hood, neck, and waistband for maximum durability. Generous fit. Color: Neon Pink Sizes: S-2XL.



CT7320 • Ladies Plaid Flannel Shirt
This ladies' plaid flannel tunic offers cozy, stylish versatility. Crafted with a 60/40 cotton/poly blend, also features roll sleeves with button tabs and a longer length, optimal for layering and personalization. Lightly brushed texture that ensures softness and comfort. Color: Grey/Cream Sizes: S-2XL.



CT7321 • Plaid Flannel Shirt
The men's plaid flannel shirt offers comfort and style with a versatile design. Crafted from a 60/40 cotton/poly blend, ensuring softness and durability. Features double chest pockets, rounded adjustable cuffs, and back shoulder pleats for a relaxed-fit. Color: Grey/Cream Sizes: S-3XL.



CT4171 • Cheyenne Boulder Cloth™ Hooded Jacket with Tricot Quilt Lining

Cheyenne Boulder Cloth™ Hooded Jacket with diamond quilted brushed tricot “soft touch” polyfill lining. Three piece hood, inside patch pocket with snap closures, inside cell phone pocket. Heavy-duty zipper pull and over-sized front pouch pockets. Sizes: S-3XL.



CT5014 • Heathered Fleece Snap Jacket

Equal parts sweatshirt and jacket come together for a casual, elevated look. This heathered fleece snap shacket is great for transitional weather. Brushed fleece on the inside for added softness and warmth. Color: Light Grey Heather Sizes: S-3XL.



CT4139 • Legacy Jacket

100% Nylon, 2.1oz (outer); 92% Polyester/8% Cotton lining (inner). Wind and water resistant jacket with contrast color stitching. Attached hood. Sizes: S-3XL.



CT4173 • Torrent Waterproof Hooded Jacket

Torrent Waterproof Hooded Jacket with a mesh-lined body and hood. 100% nylon shell, windproof, inside media pocket, and adjustable hem, hood and cuffs. Sizes: S-3XL.



CT4174 • Acceleration Jacket

Acceleration Jacket with brushed tricot interior, 100% polyester and wind and waterproof fabric protector. Features zippered hand and chest pockets, inside pocket media player port and adjustable cuffs. Sizes: S-3XL.



CT4151 • Cruise Bonded Soft Shell Jacket

7.5 oz. 96% polyester 4% spandex bonded polyester fleece. Audioport access through inside left pocket. Sizes: S-3XL.



CT4152 • Ladies Cruise Bonded Soft Shell Jacket

7.5 oz. 96% polyester 4% spandex bonded polyester fleece. Audioport access through inside left pocket. Sizes: S-2XL.



CT4165 • Zipped Pocket Anorak

A zippered pocket keeps valuables accessible and secure in this element-beating anorak. Slight drop tail hem, drawcord hem with toggles, left side seam zipper for easy on/off. Sizes: S-3XL.



CT4155 • Zone Performance Quarter Zip

3.8 oz. 100% polyester interlock with moisture-wicking and UV protection performance. Center front coil zipper with semi-autolock slider and rubber pull. Sizes: S-3XL.



CT4156 • Ladies Zone Performance Quarter Zip

3.8 oz. 100% polyester interlock with moisture-wicking and UV protection performance. Center front coil zipper with semi-autolock slider and rubber pull. Sizes: S-2XL.



CT4162 • Full Zip Craftsman Jacket

Deep open pouch pockets. Ribbed knit cuffs and hem. Contrast lining with attached drawstring hood with brass YKK zippered front. 80% Cotton/20% Polyester, 10.5oz (outer); 100% Polythermal inner lining, 7oz (inner). Sizes: S-3XL.



CT4063 • Challenger Jacket

100% nylon taslon shell, Polyester microfleece lining, Water repellant and wind resistant, Handwarmer pockets behind zippered pockets, Inside zipper pockets. Sizes S-3XL.



CT4108 • Craftsman Work Zip Hoodie

10.5 oz. 80% Cotton 20% Polyester. Contrast polythermal lining. YKK® Brass zipper, front pouch pockets. Sizes: S-3XL.



CT4179 • Ladies Polyfleece Jacket

This comfortable polyfleece jacket offers a classic look for chilly weather. Made with 100% polyester anti-pill microfleece, it features an interior thumb grab at the end of each sleeve and a contrast hanger loop inside the neck. Thoughtful details like easy-grip zipper pulls add to the feel, and the women's style has a dropped back hem, shaped seams and tapered waist for a more natural fit. Color: Black Sizes: S-2X.



CT4180 • Polyfleece Jacket

This comfortable polyfleece jacket offers a classic look for chilly weather. Made with 100% polyester anti-pill microfleece, it features an interior thumb grab at the end of each sleeve and a contrast hanger loop inside the neck. Thoughtful details like easy-grip zipper pulls add to the feel. Color: Black Sizes: S-3X.



CT4177 • Transit Jacket

Made of 90% polyester and 10% Spandex with pillow tech quilted, three-layer fabric. The top layer is lightweight with four-way stretch woven. The Alphafill Layer is full of warmth-retaining synthetic down insulation. 4-way stretch yoke and side panels for comfort. Sizes: S-3XL.



CT4178 • Ladies Transit Jacket

Made of 90% polyester and 10% Spandex with pillow tech quilted, three-layer fabric. The top layer is lightweight with four-way stretch woven. The Alphafill Layer is full of warmth-retaining synthetic down insulation. 4-way stretch yoke and side panels for comfort. Sizes: S-2XL.



CT4030 • Fleece Full Zip Jacket

100% polyester micro fleece, full-zip with self-fabric mock neck, 2 front zipper pockets, no exterior branding. Color: Black Sizes: S-3XL.



CT4031 • Ladies Fleece Full Zip Jacket

Ladies 100% polyester micro fleece, full-zip with self-fabric mock neck, 2 front zipper pockets, no exterior branding. Color: Black Sizes: S-2XL.



CT9022 • Operator In Training Onesie

Infants fine jersey bodysuit. This is double-needle stitched at the neck, shoulders, sleeves, and leg openings. Features a innovative three-snap closure. Sizes: 6M-24M.



CT9021 • Block C Infant Baseball Onesie

Infants baseball fine jersey bodysuit. Features an innovative three-snap closure. Size: 6M-24M.



CT9007 • Panda Onesie

Fine jersey infant character hooded long sleeve bodysuit with ears. Color: Black/White Sizes: 6M-24M.



CT9012 • Infant Big Yellow Machine

Made of 100% combed ring-spun cotton fine jersey. Featuring flatlock-stitches hems with innovative three snap closure and side seams. Color: Heather Sizes: 6M-24M.



CT9107 • Blue Infant Football Bodysuit

60% combed ring-spun cotton, 40% polyester vintage heathered fine jersey. Double-needle hem sleeves, with double-needle ribbed binding on leg openings. Reinforced three-snap closure. Sizes: 6M-18M.



CT9108 • Pink Infant Football Bodysuit

60% combed ring-spun cotton, 40% polyester vintage heathered fine jersey. Double-needle hem sleeves, with double-needle ribbed binding on leg openings. Reinforced three-snap closure. Sizes: 6M-18M.



CT9004 • Infant Tee | White

5.5 oz. 100% cotton. Double-needle stitches bottom and sleeve hems. Ribbed crew neck. Shoulder-to-shoulder taping. Sizes: 6M-18M.



CT9006 • Pink Infant Tee

5.5 oz. 100% cotton. Double-needle stitches bottom and sleeve hems. Ribbed crew neck. Shoulder-to-shoulder taping. Sizes: 6M-18M.



CT9123 • Grey Onesie LS Infant
Perfect for on-the-go bodies. Long-legged baby rib bodysuit.
Sizes: 6M-24M.

CT9114 • Infant Bodysuit
These bodysuits feature lap shoulders to make it easier for the many times a day that parents have to change baby's outfit. Innovative three-snap closure and CPSIA compliant tracking label in side seam.
Sizes: NB-24M.

CT9014 • Rainbow Stripe Toddler Tee
This toddler fine jersey t-shirt combines comfort with vibrant style. 100% combed ring-spun cotton. Color: Rainbow Stripe Sizes: 2T-5/6T.



CT9020 • Block C Toddler Baseball Tee
Toddlers three-quarter sleeve baseball tee. Pre-shrunk and side seams. Sizes: 2T-5T.



CT9040 • Toddler Hooded Sweatshirt | Black
8.0 oz. 60% cotton/40% polyester. Coverstitched waistband and shoulders, armholes and cuffs. Jersey-lined double-needle hem hood and side-seam pockets. Ribbed cuffs and waistband.
Sizes: 2T-5/6T

CT9033 • Toddler Hooded Sweatshirt | Pink
8.0 oz. 60% cotton/40% polyester. Coverstitched waistband and shoulders, armholes and cuffs. Jersey-lined double-needle hem hood and side-seam pockets. Ribbed cuffs and waistband.
Sizes: 2T-5/6T



CT9005 • Light Blue Infant Tee
5.5 oz. 100% cotton. Double-needle stitches bottom and sleeve hems. Ribbed crew neck. Shoulder-to-shoulder taping.
Sizes: 6M-18M.

CT9011 • Toddler Big Yellow Machine
100% combed ring-spun cotton fine jersey. Featuring shoulder-to-shoulder self fabric back neck tape and with double needle sleeves and bottom hem. Color: Heather Sizes: 2T-5/6T.

CT9016 • I Love The Way You Roll Toddler Tee
Toddler fine jersey t-shirt crafted from 100% combed ring-spun cotton. Color: White Sizes: 2T-5/6T.



CT9009 • Toddler Design Mark Tee
5.5 oz. 100% cotton jersey knot. Double-needle stitched on hem and sleeves. Sizes: 2T-5/6T.

CT9086 • Toddler Tee
5.5 oz. 100% cotton jersey knot. Double-needle stitched on hem and sleeves. Sizes: 2T-4T.

CT9121 • Make My Playground Tee
Don't let anyone stop you from playing in the dirt! Sizes: 2T-4T.



CT9013 • Youth Cat Flag Tee
Youth essential tee. Made out of 100% soft spun cotton. Color: Jet Black. Sizes: S-XL.



CT9092 • Pink Youth Hoodie
7.75 oz. 50/50 cotton/poly. Pill-resistant and softer air-jet spun yarn. Double-lined hood. 1x1 athletic knit cuffs, and waistband with spandex. Sizes: S-LG.



CT9131 • Neon Yellow Youth Core Cotton Tee
An indispensable t-shirt in our classic silhouette made of 50/50 cotton/polyester. Includes a removable tag for comfort and relabeling. Sizes: XS-XL.



CT9010 • Youth Design Mark Tee
6.1 oz. Pre-shrunk 100% cotton. Double-needle stitched neckline, sleeves and bottom hem. Seamless collar. Shoulder-to-shoulder taping. Sizes: S (6-8), M (10-12), L (14-16).



CT9118 • Empowered Youth Tee
This tri-blend tee is perfectly soft and comfortable. Turquoise tri-blend fabric infuses each garment with unique character. Sizes: XS-XL.



CT9119 • Indestructible Youth Tee
This tri-blend tee is perfectly soft and comfortable. Navy tri-blend fabric infuses each garment with unique character. Sizes: XS-LG.



CT9001 • Flower Youth Tee
5.3-ounce, 100% cotton. Non-topstitched, classic width, rib collar. Tear-away label. Sizes: XS-XL.



CT9054 • Youth Cotton Tee
6.1 oz. Pre-shrunk 100% cotton. Double-needle stitched neckline, sleeves and bottom hem. Seamless collar. Shoulder-to-shoulder taping. Sizes: S (6-8), M (10-12), L (14-16), XL (18-20).



CT9093 • Sport Grey Youth Hoodie
7.75 oz. 50/50 cotton/poly. Pill-resistant and softer air-jet spun yarn. Double-lined hood. 1x1 athletic knit cuffs, and waistband with spandex. Sizes: S-LG.



CT9000 • See You Later Excavator
4.2 oz./yd², 100% ring-spun cotton, 30 singles with Modern-classic fit. Tear-away label. Sizes: S-XL.



CT9129 • Youth Fine Jersey Tee
Made of 100% combed ring-spun cotton fine jersey. Topstitched ribbed knit collar and double needle sleeves and bottom hem. Sizes: S-XL.

NEW!



CT9023 • Caution Kids at Play Youth Tee
Youth 5.3 oz. classic-fit, cotton t-shirt. Sizes: S-XL.



CT9008 • Youth Full Zip Sweatshirt
This youth core fleece hoodie ensures cozy comfort and durability. Crafted from 50/50 cotton/poly fleece, this soft, pill-resistant sweatshirt. These feature a no-drawcord hood and convenient front pockets for a sleek, safe design. Color: Jet Black Sizes: YS-YXL.



CT9017 • Future Operator Youth Tee
Modern-classic 5.5 oz. 50/50 fit tee. DryBlend moisture-wicking properties with non-topstitched, classic width, rib collar. Sizes: XS-XL.



CT9018 • Kid Who Loves Excavators Youth Tee
Modern-classic 5.5 oz., 50/50 fit tee. DryBlend moisture-wicking properties with non-topstitched, classic width, rib collar. Sizes: XS-XL.



CT9019 • Block C Youth Baseball Tee
Youths three-quarter sleeve baseball tee. Pre-shrunk and side seams. Sizes: S-L.

WALL OF PATRIOTISM

THANK YOU FOR YOUR SERVICE!



Michael J. Bastin
Caterpillar North America Customer & Training Center Manager



Jon Wilson
U.S Navy
7 years
Regional Ops & PSSR Manager at Ring Power



Lastly Advincula
Army National Guard
Currently serving
Tech 1 at Hawthorne Cat



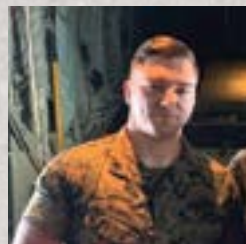
Dustin Rensch
North Dakota Army National Guard
9 years
Ag Field Service Advisor



Ronald S Jenkins
Air Force AGE Mechanic
8 years
Generator Technician at Ring Power (32 Years)



Roger Curry
U.S. Navy
30 years
Senior Analytics Manager at Caterpillar



Steven Rabida
United States Marine Corps
9 years Active Duty
Shop Technician at HOPENN Newington, CT



Kenneth Basinger
US Navy
6 years
General Field Tech at Ring Power (30+ Years)



Vince Cazares
Marines
4 Years
Machinery Service Tech 2 Hawthorne Cat



Command Sergeant Major Brian Moulton
Vermont Army National Guard (Unit 86th Troop Command)
32 Years
Parts Manager at HO Penn Newington, CT



Matt Jukkala
U.S. Army
22 years (2003 – present)
Senior Production Manager at Cat Paving Products



Micah Blanchard
United States Air Force
10 years (Currently serving)
Technician Development Specialist at Louisiana Cat

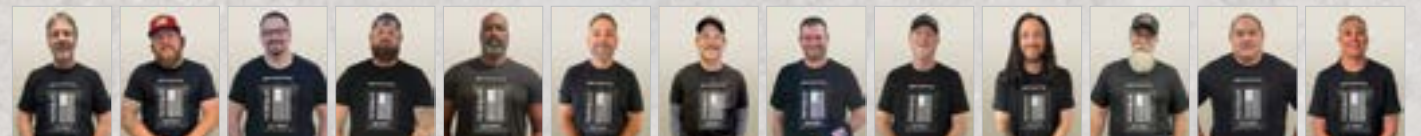


Todd Leach
United States Marine Corps
30 Years
Procurement Quality Engineer at Caterpillar



Al LaManna
U.S. Army
1985 – 1989
Technical Training Supervisor

AIR FORCE



Andy Ward
Air Force 1980-1984
Marines 1978-1980

Brent Knutson
2013-2019

Briano Santos
2005-2008

Dakota Greenwade
2013-2020

Derrick Sheffield
1998-2018

Jason Early
1997-2003

Michael Curren
1983-1985

Nate Ruddle
Marines 1996-2004
Air Force 2005-2021

Neil Sayre
1980-1984

Pete Oriarte
2003-2007

Richard Jessiman
1982-1989

Ron Yin
2006-2012

Sarah Riel
1990-1998

ARMY



Aaron Hochstrasser
1997-2005

Adam Wixson
2009-2021

Austin Rogers
2014-2017

Brad Mull
1979-2001

Brandon Veach
2013-2017

Brian Allshouse
2000-2001

Brian Bottimore
1988-1998

Brigham Lambley
2001-2007

Bruce Svatos
1972-1978

Christopher Dunham
1987-1995

Colin Hough
2009-2015

Cuong Ly
1988-1989

Danny Harris
2017-current



David Burkholder
1981-1984

David Shaw
2012-2019

Derek Price
2008-current

DJ Sullivan
2011-2015

Eric Boels
2000-current

Eric Thompson
2000-2022

Felipe Flores
2012-2023

Gordon Martell
1960-1986

Ira Burgess
2000-2008

Ivan Cruz
2019-current

James Crawford
2002-2006 & 2007-2015

Jason Henderson
2009-2013

Jeff Steinke
1990-1996



Jimmy Murphy
1996-current

John Haines
1990-1994

Jose "Rudy" Hernandez
2015-2018

Julio Rodriguez
Marines 2000-2005
Army 2006-current

Kenneth Gonzales
2001-2013

Matthew Moncur
2001-2015

Nathan Sebastian
2018-2024

Paul Worden
1967-1989

Peter Brown
1992-1997

Randy Potter
1976-1982

Robert Brattain
1984-2017

Ron Spaulding
1984-1987

Rudy Aguilar
2010-2013



Samuel Roberts
2002-2010

Saul Gonzalez
2012-2023

Scott Forster
1976-1979

Thomas Adams
1981-1992

Tim Ketchum
1978-1987

Tim Lettner
1995-1998

Tony Perrell
1988-1984

Trevor Skoien
2012-current

Victor Hollemback
1972-1975

Woodrow Kingsolver
2002-2012

COAST GUARD



Adam Boyd
2003-2011

Aaron Baird
1995-2001

Adam Williams
2006-2010

Andre Sam
2009-2014

Anthony Nelson
2008-2017

Bryan Caldwell
1997-2001

Carlos Martinez-Venegas
2015-2019

Colten Thompson
2019-2023

Dan Kerr
2008-2012

Dan Whitley
2019-2023

David Farrin
2002-2006

Doron Zentmire
2006-2010

Duane Anderson
1989-2001



Don Summers
1999-2003

Eric Plebuch
1986-1998

Garrett Pierachini
2017-2021

Holdon Rowley
2018-2022

Howell Yearwood
2008-2016

Isiah March
2017-2021

Jared Hosford
Marines 2000-2008
Army 2008-2014

Jason Atwood
1991-1996

John Rosson
2008-2012

Jose Martinez Lopez
2012-2021

Justin Harrison
2018-2022

Justin Harvey
2018-2022

Justin Windom
2012-2023



Kent Prentice
1997-2001

Kevin Alonso
2011-2017

Michael Doran
2017-2019

Phil Brown
Marines 2001-2007
Army 2007-2011

Reuben Germer
1992-1996

Ryan Nelson
2006-2004

Ryan Smith
2016-2022

Scott Wing
2000-2004

Stacey Willson
1989-1993

Tyler Housley
1993-2003

Zachary Giddings
2009-2013

NAVY



Charles Brown
1983-1989

Charlie Howe
1984-1988

David Shultz
1979-1985

Harold Sommers
1977-1994

Hunter Schaefer
2018-current

Jacob Zehrung
2009-2019

James Stone
1989-1994

Jeff Lundeen
1988-1992

Johan Smith
2012-2013

Les Boughton
1978-1974

Luke Ketchum
2009-2010

Matt Clarke
1972-1982



Michael Reed
1980-1985

Mickael Copeland
2016-2021

Nathan Culver
1974-1979

Oscar Olave
2020-2023

Rich Coleman
1993-2020

Ron Gonzalez
2016-2022

Russell LaClair
1986-1991

Scott Schuyler
1982-1986

Seth Tassie
2004-2005

Travis Ross
1992-2003



Custom Gift Boxes

Contact your MPC sales rep and tell us what you want and we will help you create your custom Ultimate Gift Box! Choose from our stock merchandise or we can create custom items just for you! Perfect for events or holidays and can be themed to match any occasion! Incentives, VIP Gifts, Baby Shower, Mother's Day, Father's Day, Virtual Meeting Gifts, Special Events, etc.



Dealer Designed

We work directly with Cat Dealers to design products that fit their vision. Bring your ideas to MPC and let us build them. If you have an idea we can make it happen.



Sarah Sealscott
Vice President



Ellie Gruman
National Sales Rep.



Pamela Ravanelli
National Sales Rep.



Carrie Seebold
Senior Customer Service
Inside Sales Support



Amber Perkins
Customer Service
Inside Sales Support



Laura Vogel
Customer Service
Inside Sales Support



Tami Lyons
Customer Service
Inside Sales Support



4300 Produce Road • Louisville, KY 40218

1.866.451.4631 or
502.451.4900

Fax 888.451.8475 or 502.451.5075

Email sales@mpcpromotions.com

www.mpcpromotions.com

Business hours 9am-5pm EST Monday-Friday



© 2025 Caterpillar.

All Rights Reserved. CAT, CATERPILLAR, LETS DO THE WORK, their respective logos, "Caterpillar Corporate Yellow," the "Power Edge" and Cat "Modern Hex" trade dress as well as corporate and product identity used herein, are trademarks of Caterpillar and may not be used without permission. Third-party trademarks are the property of their respective owners.

MPC Promotions, a licensee of Caterpillar Inc.

www.mpcpromotions.com/catmerchandise